

Summary

Production Name	CTDSP1 Rabbit Polyclonal Antibody
Description	Rabbit Polyclonal Antibody
Host	Rabbit
Application	IHC, WB, ELISA
Reactivity	Human, Mouse, Rat

Performance

Conjugation	Unconjugated
Modification	Unmodified
Isotype	IgG
Clonality	Polyclonal
Form	Liquid
Storage	Store at 4°C short term. Aliquot and store at -20°C long term. Avoid freeze/thaw cycles.
Buffer	Liquid in PBS containing 50% glycerol, 0.5% BSA and 0.02% New type preservative N.
Purification	Affinity purification

Immunogen

Gene Name	CTDSP1
Alternative Names	CTDSP1; NIF3; NLIIF; SCP1; Carboxy-terminal domain RNA polymerase II polypeptide A small phosphatase 1; Nuclear LIM interactor-interacting factor 3; NLI-IF; NLI-interacting factor 3; Small C-terminal domain phosphatase 1; SCP1; Small CTD ph
Gene ID	58190.0
SwissProt ID	Q9GZU7. The antiserum was produced against synthesized peptide derived from human CTDSP1. AA range: 1-50

Application

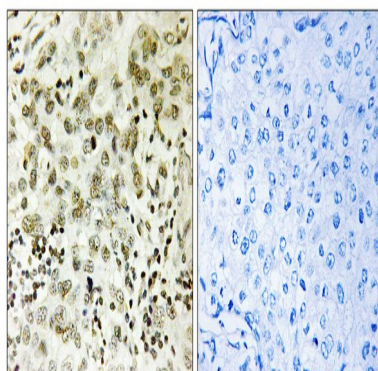
Dilution Ratio	WB 1:500 - 1:2000. IHC 1:100 - 1:300. ELISA: 1:40000..
Molecular Weight	30kD

Background

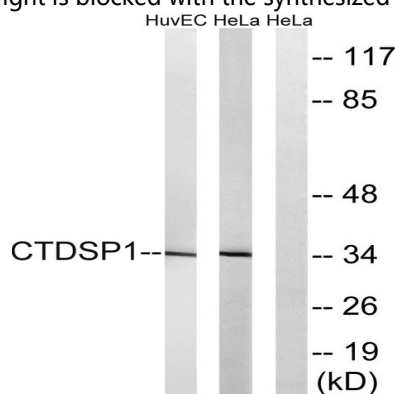
CTD small phosphatase 1(CTDSP1) Homo sapiens This gene encodes a member of the small C-terminal domain phosphatase (SCP) family of nuclear phosphatases. These proteins play a role in transcriptional regulation through specific dephosphorylation of phosphoserine 5 within tandem heptapeptide repeats of the C-terminal domain of RNA polymerase II. The encoded protein plays a role in neuronal gene silencing in non-neuronal cells, and may also inhibit osteoblast differentiation. Alternatively spliced transcript variants encoding multiple isoforms have been observed for this gene. [provided by RefSeq, Oct 2011],catalytic activity:A phosphoprotein + H(2)O = a protein + phosphate.,similarity:Contains 1 FCP1 homology domain.,subunit:May interact with LDB1 .,tissue specificity:Ubiquitously expressed, with highest expression in spleen, lung and placenta.,

Research Area

Image Data

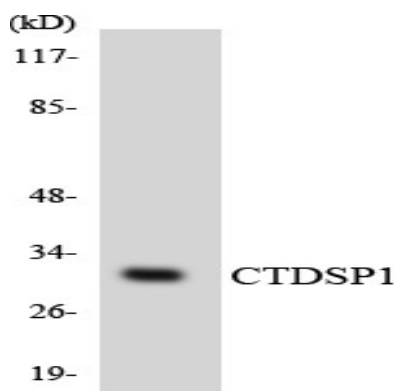


Immunohistochemistry analysis of paraffin-embedded human breast carcinoma tissue, using CTDSP1 Antibody. The picture on the right is blocked with the synthesized peptide.

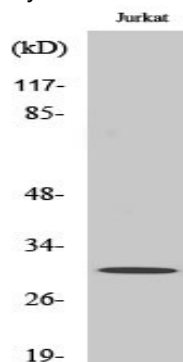


Western blot analysis of lysates from HeLa and HUVEC cells, using CTDSP1 Antibody. The lane on the right is blocked with the synthesized peptide.

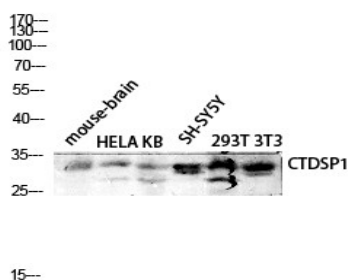
Product Name: CTDSP1 Rabbit Polyclonal Antibody
Catalog #: APRab09496



Western blot analysis of the lysates from HepG2 cells using CTDSP1 antibody.



Western Blot analysis of various cells using CTDSP1 Polyclonal Antibody diluted at 1: 1000 cells nucleus extracted by Minute TM Cytoplasmic and Nuclear Fractionation kit (SC-003, Inventbiotech, MN, USA) .



Western blot analysis of mouse-brain HELA KB SH-SY5Y 293T 3T3 lysis using CTDSP1 antibody. Antibody was diluted at 1:1000 cells nucleus extracted by Minute TM Cytoplasmic and Nuclear Fractionation kit (SC-003, Inventbiotech, MN, USA) .

Note

For research use only.