

**Product Name: CSH1 Rabbit Polyclonal Antibody**  
**Catalog #: APRab09451**



## Summary

<b>Production Name</b>	CSH1 Rabbit Polyclonal Antibody
<b>Description</b>	Rabbit Polyclonal Antibody
<b>Host</b>	Rabbit
<b>Application</b>	WB
<b>Reactivity</b>	Human,Rat,Mouse

## Performance

<b>Conjugation</b>	Unconjugated
<b>Modification</b>	Unmodified
<b>Isotype</b>	IgG
<b>Clonality</b>	Polyclonal
<b>Form</b>	Liquid
<b>Storage</b>	Store at 4°C short term. Aliquot and store at -20°C long term. Avoid freeze/thaw cycles.
<b>Buffer</b>	Liquid in PBS containing 50% glycerol, 0.5% BSA and 0.02% New type preservative N.
<b>Purification</b>	Affinity purification

## Immunogen

<b>Gene Name</b>	CSH1; CSH2
<b>Alternative Names</b>	CSH1; CSH2
<b>Gene ID</b>	1442.0
<b>SwissProt ID</b>	P01243.Synthetic peptide from human protein at AA range: 161-210

## Application

<b>Dilution Ratio</b>	WB 1:500-2000, ELISA 1:10000-20000.
<b>Molecular Weight</b>	25kD

## Background

The protein encoded by this gene is a member of the somatotropin/prolactin family of hormones and plays an important role in growth control. The gene is located at the growth hormone locus on chromosome 17 along with four other related

**Product Name: CSH1 Rabbit Polyclonal Antibody**  
**Catalog #: APRab09451**

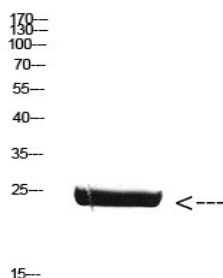


genes in the same transcriptional orientation; an arrangement which is thought to have evolved by a series of gene duplications. Although the five genes share a remarkably high degree of sequence identity, they are expressed selectively in different tissues. Alternative splicing generates additional isoforms of each of the five growth hormones, leading to further diversity and potential for specialization. This particular family member is expressed mainly in the placenta and utilizes multiple transcription initiation sites. Expression of the identical mature proteins for chorionic somatomammotropin hormones 1 and 2 is upregulated during development, alfunction:Similar to that of somatotropin.,miscellaneous:The sequence of CSH1 is shown.,similarity:Belongs to the somatotropin/prolactin family.,

## Research Area

Neuroactive ligand-receptor interaction;Jak\_STAT;

## Image Data



Western Blot analysis of mouse-brain cells using Antibody diluted at 800. Secondary antibody was diluted at 1:20000

## Note

For research use only.