

Summary

Production Name	CRP1 Rabbit Polyclonal Antibody
Description	Rabbit Polyclonal Antibody
Host	Rabbit
Application	IHC, WB, ELISA
Reactivity	Human, Mouse, Rat

Performance

Conjugation	Unconjugated
Modification	Unmodified
Isotype	IgG
Clonality	Polyclonal
Form	Liquid
Storage	Store at 4°C short term. Aliquot and store at -20°C long term. Avoid freeze/thaw cycles.
Buffer	Liquid in PBS containing 50% glycerol, 0.5% BSA and 0.02% New type preservative N.
Purification	Affinity purification

Immunogen

Gene Name	CSRP1
Alternative Names	CSRP1; CSRP; CYRP; Cysteine and glycine-rich protein 1; Cysteine-rich protein 1; CRP; CRP1
Gene ID	1465.0
SwissProt ID	P21291. The antiserum was produced against synthesized peptide derived from human CRP1. AA range: 51-100

Application

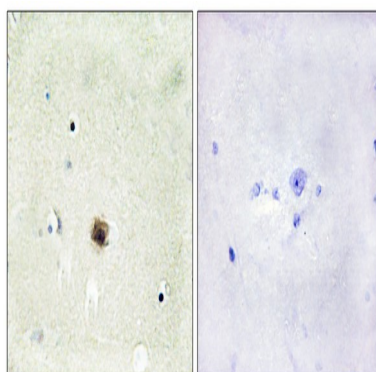
Dilution Ratio	WB 1:500 - 1:2000. IHC 1:100 - 1:300. ELISA: 1:20000..
Molecular Weight	22kD

Background

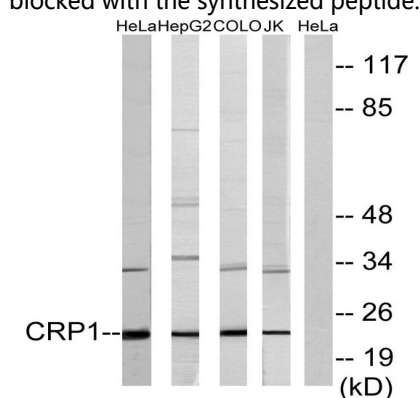
This gene encodes a member of the cysteine-rich protein (CSRP) family. This gene family includes a group of LIM domain proteins, which may be involved in regulatory processes important for development and cellular differentiation. The LIM/double zinc-finger motif found in this gene product occurs in proteins with critical functions in gene regulation, cell growth, and somatic differentiation. Alternatively spliced transcript variants have been described. [provided by RefSeq, Aug 2010],function:Could play a role in neuronal development.,similarity:Contains 1 LIM zinc-binding domain.,similarity:Contains 2 LIM zinc-binding domains.,subunit:Monomer.,

Research Area

Image Data

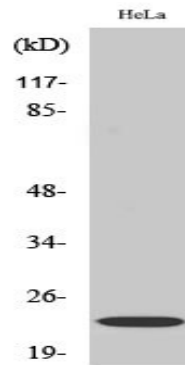


Immunohistochemistry analysis of paraffin-embedded human brain tissue, using CRP1 Antibody. The picture on the right is blocked with the synthesized peptide.



Western blot analysis of lysates from HeLa, HepG2, COLO, and Jurkat cells, using CRP1 Antibody. The lane on the right is blocked with the synthesized peptide.

Product Name: CRP1 Rabbit Polyclonal Antibody
Catalog #: APRab09422



Western Blot analysis of various cells using CRP1 Polyclonal Antibody diluted at 1: 1000 cells nucleus extracted by Minute
TM Cytoplasmic and Nuclear Fractionation kit (SC-003, Inventbiotech, MN, USA) .

Note

For research use only.