

**Product Name: CRP Rabbit Polyclonal Antibody**  
**Catalog #: APRab09421**



## Summary

<b>Production Name</b>	CRP Rabbit Polyclonal Antibody
<b>Description</b>	Rabbit Polyclonal Antibody
<b>Host</b>	Rabbit
<b>Application</b>	WB,IHC,IF,ELISA
<b>Reactivity</b>	Human,Rat

## Performance

<b>Conjugation</b>	Unconjugated
<b>Modification</b>	Unmodified
<b>Isotype</b>	IgG
<b>Clonality</b>	Polyclonal
<b>Form</b>	Liquid
<b>Storage</b>	Store at 4°C short term. Aliquot and store at -20°C long term. Avoid freeze/thaw cycles.
<b>Buffer</b>	Liquid in PBS containing 50% glycerol, 0.5% BSA and 0.02% New type preservative N.
<b>Purification</b>	Affinity purification

## Immunogen

<b>Gene Name</b>	CRP
<b>Alternative Names</b>	CRP; PTX1; C-reactive protein
<b>Gene ID</b>	1401.0
<b>SwissProt ID</b>	P02741.The antiserum was produced against synthesized peptide derived from the Internal region of human CRP. AA range:101-150

## Application

<b>Dilution Ratio</b>	WB 1:500 - 1:2000. IHC-p: 1:100-300 ELISA: 1:20000.. IF 1:50-200
<b>Molecular Weight</b>	25kD

## Background

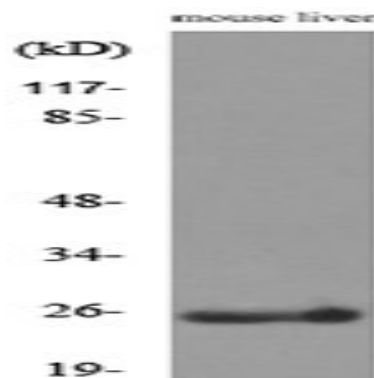
**Product Name: CRP Rabbit Polyclonal Antibody**  
**Catalog #: APRab09421**



C-reactive protein(CRP) Homo sapiens The protein encoded by this gene belongs to the pentaxin family. It is involved in several host defense related functions based on its ability to recognize foreign pathogens and damaged cells of the host and to initiate their elimination by interacting with humoral and cellular effector systems in the blood. Consequently, the level of this protein in plasma increases greatly during acute phase response to tissue injury, infection, or other inflammatory stimuli. [provided by RefSeq, Sep 2009],cofactor: Binds 2 calcium ions per subunit.,function: Displays several functions associated with host defense: it promotes agglutination, bacterial capsular swelling, phagocytosis and complement fixation through its calcium-dependent binding to phosphorylcholine. Can interact with DNA and histones and may scavenge nuclear material released from damaged circulating cells.,induction: The concentration of CRP in plasma increases greatly during acute phase response to tissue injury, infection or other inflammatory stimuli. It is induced by IL-1 and IL-6.,mass spectrometry: Ref.14,miscellaneous: This protein owes its name to its ability precipitate pneumococcal C-polysaccharide in the presence of calcium.,online information: C-reactive protein entry,online information: No more Christmas pudding? - Issue 30 of January 2003,similarity: Belongs to the pentaxin family.,similarity: Contains 1 pentaxin domain.,subunit: Homopentamer. Pentaxin (or pentraxin) have a discoid arrangement of 5 non-covalently bound subunits.,tissue specificity: Found in plasma.,

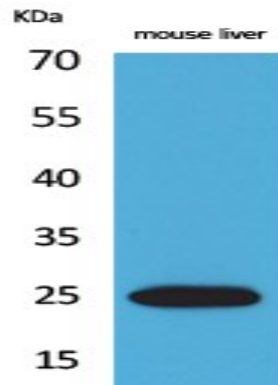
## Research Area

## Image Data

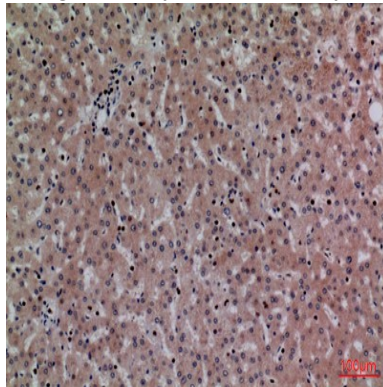


Western blot analysis of lysate from mouse liver cells, using CRP Antibody.

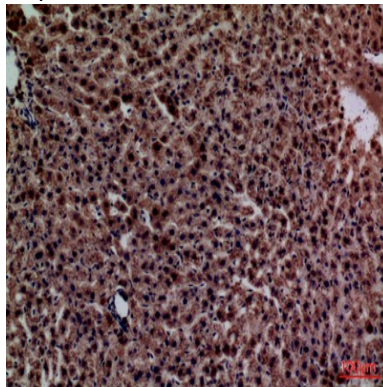
**Product Name: CRP Rabbit Polyclonal Antibody**  
**Catalog #: APRab09421**



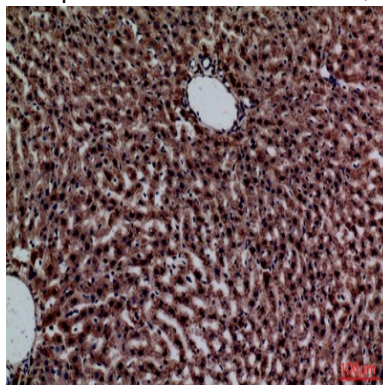
Western Blot analysis of mouse liver cells using CRP Polyclonal Antibody.. Secondary antibody was diluted at 1:20000



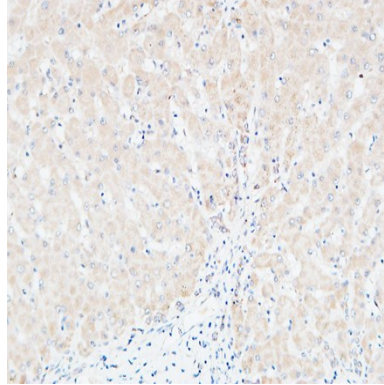
Immunohistochemical analysis of paraffin-embedded human-liver, antibody was diluted at 1:100



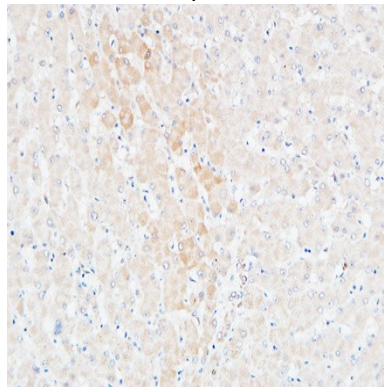
Immunohistochemical analysis of paraffin-embedded rat-liver, antibody was diluted at 1:100



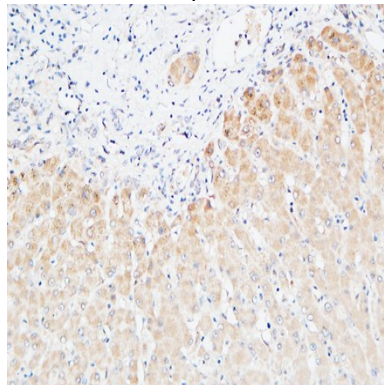
Immunohistochemical analysis of paraffin-embedded rat-liver, antibody was diluted at 1:100



Immunohistochemical analysis of paraffin-embedded Human Liver. 1, Antibody was diluted at 1:200 (4°,overnight) . 2, High-pressure and temperature EDTA, pH8.0 was used for antigen retrieval. 3,Secondary antibody was diluted at 1:200 (room temperature, 30min) .



Immunohistochemical analysis of paraffin-embedded Human Liver. 1, Antibody was diluted at 1:200 (4°,overnight) . 2, High-pressure and temperature EDTA, pH8.0 was used for antigen retrieval. 3,Secondary antibody was diluted at 1:200 (room temperature, 30min) .



Immunohistochemical analysis of paraffin-embedded Human Liver. 1, Antibody was diluted at 1:200 (4°,overnight) . 2, High-pressure and temperature EDTA, pH8.0 was used for antigen retrieval. 3,Secondary antibody was diluted at 1:200 (room temperature, 30min) .

**Product Name: CRP Rabbit Polyclonal Antibody**  
**Catalog #: APRab09421**

---



**Note**

For research use only.