

---

## Summary

<b>Production Name</b>	Crk-L Rabbit Polyclonal Antibody
<b>Description</b>	Rabbit Polyclonal Antibody
<b>Host</b>	Rabbit
<b>Application</b>	IF,IHC,WB,
<b>Reactivity</b>	Human,Mouse,Rat,Monkey

## Performance

<b>Conjugation</b>	Unconjugated
<b>Modification</b>	Unmodified
<b>Isotype</b>	IgG
<b>Clonality</b>	Polyclonal
<b>Form</b>	Liquid
<b>Storage</b>	Store at 4°C short term. Aliquot and store at -20°C long term. Avoid freeze/thaw cycles.
<b>Buffer</b>	Liquid in PBS containing 50% glycerol, 0.5% BSA and 0.02% New type preservative N.
<b>Purification</b>	Affinity purification

## Immunogen

<b>Gene Name</b>	CRKL
<b>Alternative Names</b>	CRKL; Crk-like protein
<b>Gene ID</b>	1399.0
<b>SwissProt ID</b>	P46109.The antiserum was produced against synthesized peptide derived from human CrkL. AA range:173-222

## Application

<b>Dilution Ratio</b>	WB 1:500 - 1:2000 IHC 1:100 - 1:300. IF 1:200 - 1:1000. ELISA: 1:10000. Not yet tested in other applications.
<b>Molecular Weight</b>	39kD

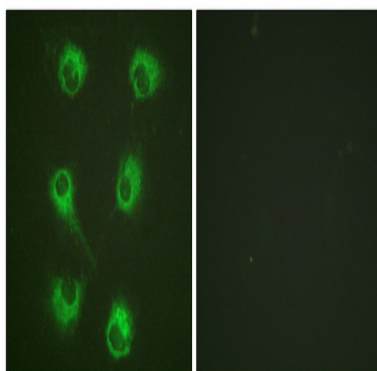
## Background

This gene encodes a protein kinase containing SH2 and SH3 (src homology) domains which has been shown to activate the RAS and JUN kinase signaling pathways and transform fibroblasts in a RAS-dependent fashion. It is a substrate of the BCR-ABL tyrosine kinase, plays a role in fibroblast transformation by BCR-ABL, and may be oncogenic.[provided by RefSeq, Jan 2009],function:May mediate the transduction of intracellular signals.,similarity:Contains 1 SH2 domain.,similarity:Contains 2 SH3 domains.,subunit:Interacts with INPP5D/SHIP1. Interacts with DOCK2 and EPOR. Interacts with phosphorylated CBLB and IRS4.,

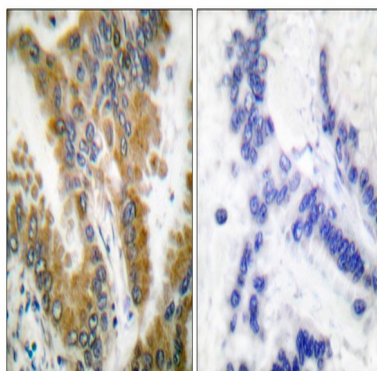
## Research Area

MAPK\_ERK\_Growth;MAPK\_G\_Protein;ErbB\_HER;Chemokine;Focal adhesion;Fc gamma R-mediated phagocytosis;Neurotrophin;Regulates Actin and Cytoskeleton;Insulin\_Receptor;Pathways in cancer;Renal cell carcinoma;Chronic myeloid leukemia;

## Image Data

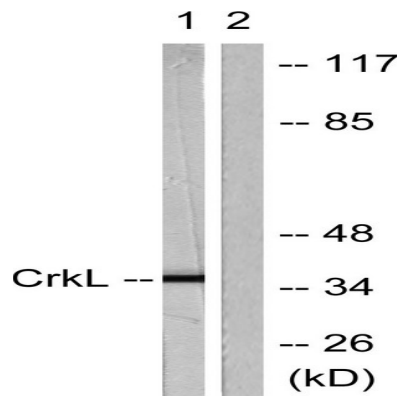


Immunofluorescence analysis of HUVEC cells, using CrkL Antibody. The picture on the right is blocked with the synthesized peptide.

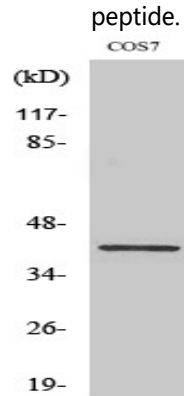


Immunohistochemistry analysis of paraffin-embedded human lung carcinoma tissue, using CrkL Antibody. The picture on the right is blocked with the synthesized peptide.

**Product Name: Crk-L Rabbit Polyclonal Antibody**  
**Catalog #: APRab09405**



Western blot analysis of lysates from 293 cells, using CrkL Antibody. The lane on the right is blocked with the synthesized peptide.



Western Blot analysis of various cells using Crk-L Polyclonal Antibody

## Note

For research use only.