

Product Name: CRIF1 Rabbit Polyclonal Antibody
Catalog #: APRab09397



Summary

Production Name	CRIF1 Rabbit Polyclonal Antibody
Description	Rabbit Polyclonal Antibody
Host	Rabbit
Application	IHC,ELISA
Reactivity	Human,Rat,Mouse

Performance

Conjugation	Unconjugated
Modification	Unmodified
Isotype	IgG
Clonality	Polyclonal
Form	Liquid
Storage	Store at 4°C short term. Aliquot and store at -20°C long term. Avoid freeze/thaw cycles.
Buffer	Liquid in PBS containing 50% glycerol, 0.5% BSA and 0.02% New type preservative N.
Purification	Affinity purification

Immunogen

Gene Name	GADD45GIP1
Alternative Names	GADD45GIP1; PLINP1; PRG6; Growth arrest and DNA damage-inducible proteins-interacting protein 1; CKII beta-associating protein; CR6-interacting factor 1; CRIF1; Papillomavirus L2-interacting nuclear protein 1; PLINP; PLINP-1; p53-responsive
Gene ID	90480.0
SwissProt ID	Q8TAE8.The antiserum was produced against synthesized peptide derived from human GADD45GIP1. AA range:91-140

Application

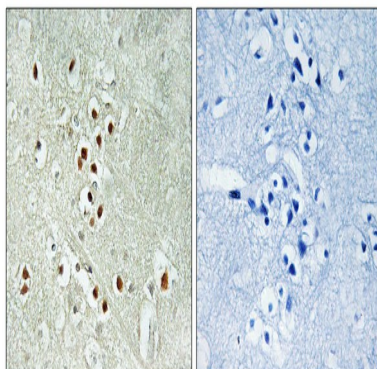
Dilution Ratio	IHC 1:100-1:300 ELISA: 1:40000
Molecular Weight	

Background

This gene encodes a nuclear-localized protein that may be induced by p53 and regulates the cell cycle by inhibiting G1 to S phase progression. The encoded protein may interact with other cell cycle regulators. [provided by RefSeq, Aug 2012],function:Acts as a negative regulator of G1 to S cell cycle phase progression by inhibiting cyclin-dependent kinases. Inhibitory effects are additive with GADD45 proteins but occurs also in the absence of GADD45 proteins. Acts as a repressor of the orphan nuclear receptor NR4A1 by inhibiting AB domain-mediated transcriptional activity. May be involved in the hormone-mediated regulation of NR4A1 transcriptional activity.,induction:Down-regulated by p53/TP53 in apoptotic cells.,miscellaneous:Cells overexpressing GADD45GIP1 were more likely to be in G1 and less likely to be in S phase and grow more slowly than control cells. Inhibiting the expression of GADD45GIP1 promotes cell cycle progression.,subunit:Interacts with GADD45A, GADD45B and GADD45G. Interacts with NR4A1 via the NR4A1 AB domain. Interacts with the human papilloma virus type 16 (HPV 16) minor capsid protein L2.,tissue specificity:Widely expressed. Highly expressed in the thyroid gland, heart, lymph nodes, trachea and adrenal tissues. Expressed at lower level in liver skeletal muscle, kidney, pancreas, testis, ovary and stomach. Barely detectable in adrenal adenoma and papillary thyroid cancer.,

Research Area

Image Data



Immunohistochemistry analysis of paraffin-embedded human brain, using GADD45GIP1 Antibody. The picture on the right is blocked with the synthesized peptide.

Note

For research use only.