

**Product Name: CREM Rabbit Polyclonal Antibody**  
**Catalog #: APRab09388**



## Summary

<b>Production Name</b>	CREM Rabbit Polyclonal Antibody
<b>Description</b>	Rabbit Polyclonal Antibody
<b>Host</b>	Rabbit
<b>Application</b>	WB,IHC,ELISA
<b>Reactivity</b>	Human,Mouse,Rat

## Performance

<b>Conjugation</b>	Unconjugated
<b>Modification</b>	Unmodified
<b>Isotype</b>	IgG
<b>Clonality</b>	Polyclonal
<b>Form</b>	Liquid
<b>Storage</b>	Store at 4°C short term. Aliquot and store at -20°C long term. Avoid freeze/thaw cycles.
<b>Buffer</b>	Liquid in PBS containing 50% glycerol, 0.5% BSA and 0.02% New type preservative N.
<b>Purification</b>	Affinity purification

## Immunogen

<b>Gene Name</b>	CREM
<b>Alternative Names</b>	CREM; cAMP-responsive element modulator; Inducible cAMP early repressor; ICER
<b>Gene ID</b>	1390.0
<b>SwissProt ID</b>	Q03060.The antiserum was produced against synthesized peptide derived from human CREM. AA range:81-130

## Application

<b>Dilution Ratio</b>	WB 1:500 - 1:2000. IHC 1:100 - 1:300. ELISA: 1:20000..
<b>Molecular Weight</b>	34kD

## Background

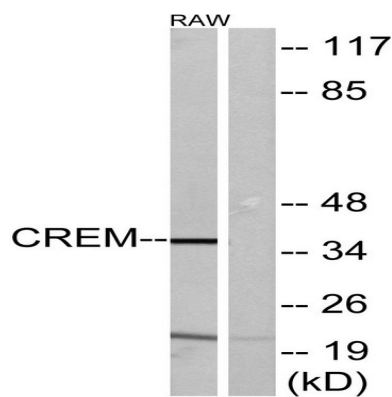
**Product Name: CREM Rabbit Polyclonal Antibody**  
**Catalog #: APRab09388**



cAMP responsive element modulator(CREM) Homo sapiens This gene encodes a bZIP transcription factor that binds to the cAMP responsive element found in many viral and cellular promoters. It is an important component of cAMP-mediated signal transduction during the spermatogenic cycle, as well as other complex processes. Alternative promoter and translation initiation site usage allows this gene to exert spatial and temporal specificity to cAMP responsiveness. Multiple alternatively spliced transcript variants encoding several different isoforms have been found for this gene, with some of them functioning as activators and some as repressors of transcription. [provided by RefSeq, Jul 2008],caution:The sequence shown here is derived from an Ensembl automatic analysis pipeline and should be considered as preliminary data.,function:Transcriptional regulator that binds the cAMP response element (CRE), a sequence present in many viral and cellular promoters. Isoforms are either transcriptional activators or repressors. Plays a role in spermatogenesis and is involved in spermatid maturation.,PTM:Stimulated by phosphorylation.,sequence caution:Translated as Tyr.,similarity:Belongs to the bZIP family.,similarity:Contains 1 bZIP domain.,similarity:Contains 1 KID (kinase-inducible) domain.,subunit:Binds DNA as a dimer. Interacts with FHL5.,tissue specificity:Expressed in testes (round spermatids) (at protein level). Isoform 14 is the major activator form in testes.,

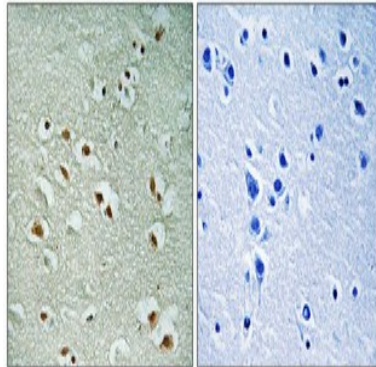
## Research Area

## Image Data

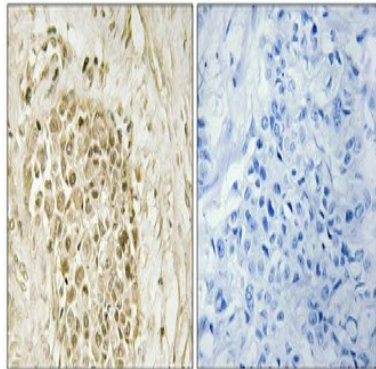


Western blot analysis of lysates from RAW264.7 cells, using CREM Antibody. The lane on the right is blocked with the synthesized peptide.

**Product Name: CREM Rabbit Polyclonal Antibody**  
**Catalog #: APRab09388**



Immunohistochemical analysis of paraffin-embedded Human brain. Antibody was diluted at 1:100 (4°,overnight) . High-pressure and temperature Tris-EDTA,pH8.0 was used for antigen retrieval. Negative contrl (right) obtaned from antibody was pre-absorbed by immunogen peptide.



Immunohistochemical analysis of paraffin-embedded Human breast cancer. Antibody was diluted at 1:100 (4°,overnight) . High-pressure and temperature Tris-EDTA,pH8.0 was used for antigen retrieval. Negetive contrl (right) obtaned from antibody was pre-absorbed by immunogen peptide.

## **Note**

For research use only.