

**Product Name: CREG1 Rabbit Polyclonal Antibody**  
**Catalog #: APRab09382**



## Summary

<b>Production Name</b>	CREG1 Rabbit Polyclonal Antibody
<b>Description</b>	Rabbit Polyclonal Antibody
<b>Host</b>	Rabbit
<b>Application</b>	WB
<b>Reactivity</b>	Human,Rat,Mouse

## Performance

<b>Conjugation</b>	Unconjugated
<b>Modification</b>	Unmodified
<b>Isotype</b>	IgG
<b>Clonality</b>	Polyclonal
<b>Form</b>	Liquid
<b>Storage</b>	Store at 4°C short term. Aliquot and store at -20°C long term. Avoid freeze/thaw cycles.
<b>Buffer</b>	Liquid in PBS containing 50% glycerol, and 0.02% New type preservative N.
<b>Purification</b>	Affinity purification

## Immunogen

<b>Gene Name</b>	CREG1 CREG UNQ727/PRO1409
<b>Alternative Names</b>	
<b>Gene ID</b>	8804.0
<b>SwissProt ID</b>	O75629.Synthesized peptide derived from part region of human protein

## Application

<b>Dilution Ratio</b>	WB 1:500-2000 ELISA 1:5000-20000
<b>Molecular Weight</b>	24kD

## Background

The adenovirus E1A protein both activates and represses gene expression to promote cellular proliferation and inhibit differentiation. The protein encoded by this gene antagonizes transcriptional activation and cellular transformation by E1A.

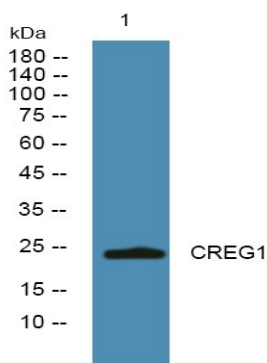
**Product Name: CREG1 Rabbit Polyclonal Antibody**  
**Catalog #: AP Rab09382**



This protein shares limited sequence similarity with E1A and binds both the general transcription factor TBP and the tumor suppressor pRb in vitro. This gene may contribute to the transcriptional control of cell growth and differentiation. [provided by RefSeq, Jul 2008],function:May contribute to the transcriptional control of cell growth and differentiation. Antagonizes transcriptional activation and cellular transformation by the adenovirus E1A protein. The transcriptional control activity of cell growth requires interaction with IGF2R.,PTM:N-glycosylated.,similarity:Belongs to the CREG family.,subunit:Homodimer. Interacts with IGF2R; the interaction is dependent on glycosylation.,

## Research Area

## Image Data



Western blot analysis of lysates from U2OS cells, primary antibody was diluted at 1:1000, 4°over night

## Note

For research use only.