

Summary

Production Name	CPZ Rabbit Polyclonal Antibody
Description	Rabbit Polyclonal Antibody
Host	Rabbit
Application	WB
Reactivity	Human,Rat

Performance

Conjugation	Unconjugated
Modification	Unmodified
Isotype	IgG
Clonality	Polyclonal
Form	Liquid
Storage	Store at 4°C short term. Aliquot and store at -20°C long term. Avoid freeze/thaw cycles.
Buffer	Liquid in PBS containing 50% glycerol, 0.5% BSA and 0.02% New type preservative N.
Purification	Affinity purification

Immunogen

Gene Name	CPZ
Alternative Names	CPZ; Carboxypeptidase Z; CPZ
Gene ID	8532.0
SwissProt ID	Q66K79.Synthesized peptide derived from CPZ . at AA range: 330-410

Application

Dilution Ratio	WB 1:500-1:2000. ELISA: 1:40000.
Molecular Weight	73kD

Background

carboxypeptidase Z(CPZ) Homo sapiens This gene encodes a member of the metallo-carboxypeptidase family. This enzyme displays carboxypeptidase activity towards substrates with basic C-terminal residues. It is most active at neutral pH

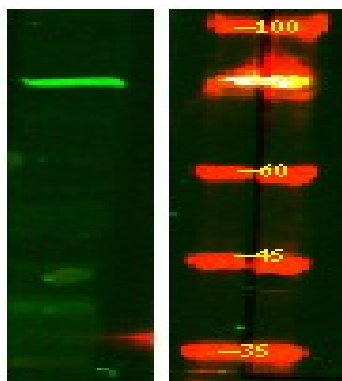
Product Name: CPZ Rabbit Polyclonal Antibody
Catalog #: APRab09339



and is inhibited by active site-directed inhibitors of metalloproteases. Alternative splicing in the coding region results in multiple transcript variants encoding different isoforms. [provided by RefSeq, Jul 2008],cofactor: Binds 1 zinc ion per subunit.,enzyme regulation: Inhibited by 2-mercaptomethyl-3-guanidinoethylthiopropionic acid (MGTA) and guanidinoethylmercaptosuccinic acid (GEMSA). Inhibited by chelating agents such as EDTA and EGTA.,function: Cleaves substrates with C-terminal arginine residues. Probably modulates the Wnt signaling pathway, by cleaving some undefined protein. May play a role in cleavage during prohormone processing.,similarity: Belongs to the peptidase M14 family.,similarity: Contains 1 FZ (frizzled) domain.,tissue specificity: In placenta, it is present within invasive trophoblasts and in the surrounding extracellular space. Also present in amnion cells, but is not readily apparent in the extracellular matrix of this cell type. Present in normal pituitary gland and neoplastic pituitary gland (especially POMC-, GH- and PRL-producing adenomas) (at protein level). Widely expressed.,

Research Area

Image Data



Western Blot analysis of HEK293 lysis, using primary antibody at 1:1000 dilution. Secondary antibody was diluted at 1:10000

Note

For research use only.