

Summary

Production Name	CPXM2 Rabbit Polyclonal Antibody
Description	Rabbit Polyclonal Antibody
Host	Rabbit
Application	IHC,ELISA
Reactivity	Human,Rat,Mouse

Performance

Conjugation	Unconjugated
Modification	Unmodified
Isotype	IgG
Clonality	Polyclonal
Form	Liquid
Storage	Store at 4°C short term. Aliquot and store at -20°C long term. Avoid freeze/thaw cycles.
Buffer	Liquid in PBS containing 50% glycerol, 0.5% BSA and 0.02% New type preservative N.
Purification	Affinity purification

Immunogen

Gene Name	CPXM2
Alternative Names	CPXM2; Inactive carboxypeptidase-like protein X2
Gene ID	119587.0
SwissProt ID	Q8N436.The antiserum was produced against synthesized peptide derived from human CPXM2. AA range:450-500

Application

Dilution Ratio	IHC 1:100-1:300 ELISA: 1:20000
Molecular Weight	

Background

caution:As it has lost active sites residues and zinc-binding sites it is unlikely to be catalytically active.,function:May be

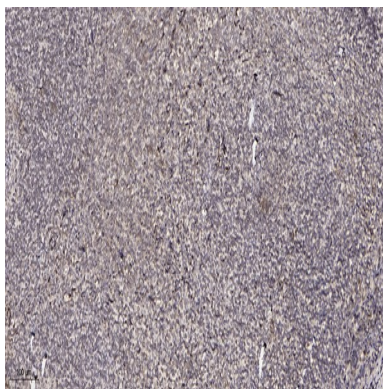
Product Name: CPXM2 Rabbit Polyclonal Antibody
Catalog #: APRab09338



involved in cell-cell interactions.,similarity:Belongs to the peptidase M14 family.,similarity:Contains 1 F5/8 type C domain.,caution:As it has lost active sites residues and zinc-binding sites it is unlikely to be catalytically active.,function:May be involved in cell-cell interactions.,similarity:Belongs to the peptidase M14 family.,similarity:Contains 1 F5/8 type C domain.,

Research Area

Image Data



Immunohistochemical analysis of paraffin-embedded human tonsil. 1, Antibody was diluted at 1:200 (4° overnight) . 2, Tris-EDTA,pH9.0 was used for antigen retrieval. 3,Secondary antibody was diluted at 1:200 (room temperature, 30min) .

Note

For research use only.