

**Product Name: CPO Rabbit Polyclonal Antibody**  
**Catalog #: APRab09325**



## Summary

|                        |                                |
|------------------------|--------------------------------|
| <b>Production Name</b> | CPO Rabbit Polyclonal Antibody |
| <b>Description</b>     | Rabbit Polyclonal Antibody     |
| <b>Host</b>            | Rabbit                         |
| <b>Application</b>     | WB,ELISA                       |
| <b>Reactivity</b>      | Human,Rat,Mouse                |

## Performance

|                     |  |
|---------------------|--|
| <b>Conjugation</b>  | Unconjugated   |
| <b>Modification</b> | Unmodified   |
| <b>Isotype</b>      | IgG  |
| <b>Clonality</b>    | Polyclonal   |
| <b>Form</b>         | Liquid   |
| <b>Storage</b>      | Store at 4°C short term. Aliquot and store at -20°C long term. Avoid freeze/thaw cycles. |
| <b>Buffer</b>       | Liquid in PBS containing 50% glycerol, 0.5% BSA and 0.02% New type preservative N.       |
| <b>Purification</b> | Affinity purification  |

## Immunogen

|                          |  |
|--------------------------|--|
| <b>Gene Name</b>         | CPO  |
| <b>Alternative Names</b> | Carboxypeptidase O (CPO;EC 3.4.17.-)                               |
| <b>Gene ID</b>           | 130749.0   |
| <b>SwissProt ID</b>      | Q8IVL8.Synthesized peptide derived from human CPO AA range: 50-100 |

## Application

**Dilution Ratio** IHC 1:50-200 ELISA(peptide)1:5000-20000

**Molecular Weight**

## Background

carboxypeptidase O(CPO) Homo sapiens This gene is a member of the metallo-carboxypeptidase gene family. [provided by RefSeq, Jan 2011],cofactor: Binds 1 zinc ion per subunit.,function: Probable carboxypeptidase which may cleave proteins

**Product Name: CPO Rabbit Polyclonal Antibody**  
**Catalog #: APRab09325**

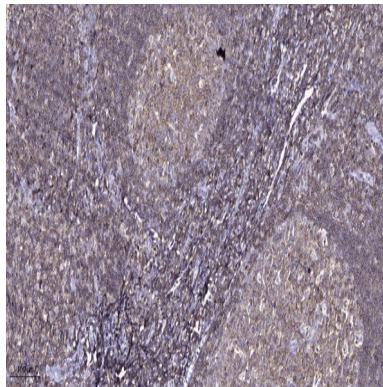


---

with C-terminal acidic residues.,similarity:Belongs to the peptidase M14 family.,

## **Research Area**

## **Image Data**



Immunohistochemical analysis of paraffin-embedded human tonsil. 1, Antibody was diluted at 1:200 (4° overnight) . 2, Tris-EDTA,pH9.0 was used for antigen retrieval. 3,Secondary antibody was diluted at 1:200 (room temperature, 45min) .

## **Note**

For research use only.