

Summary

Production Name	cPLA2-ε Rabbit Polyclonal Antibody
Description	Rabbit Polyclonal Antibody
Host	Rabbit
Application	IHC,ELISA
Reactivity	Human,Rat,Mouse

Performance

Conjugation	Unconjugated
Modification	Unmodified
Isotype	IgG
Clonality	Polyclonal
Form	Liquid
Storage	Store at 4°C short term. Aliquot and store at -20°C long term. Avoid freeze/thaw cycles.
Buffer	Liquid in PBS containing 50% glycerol, 0.5% BSA and 0.02% New type preservative N.
Purification	Affinity purification

Immunogen

Gene Name	PLA2G4E
Alternative Names	PLA2G4E; Cytosolic phospholipase A2 epsilon; cPLA2-epsilon; Phospholipase A2 group IVE
Gene ID	123745.0
SwissProt ID	Q3MJ16.The antiserum was produced against synthesized peptide derived from human PLA2G4E. AA range:401-450

Application

Dilution Ratio	IHC 1:100-1:300 ELISA: 1:40000
Molecular Weight	

Background

Product Name: cPLA2-ε Rabbit Polyclonal Antibody
Catalog #: APRab09317

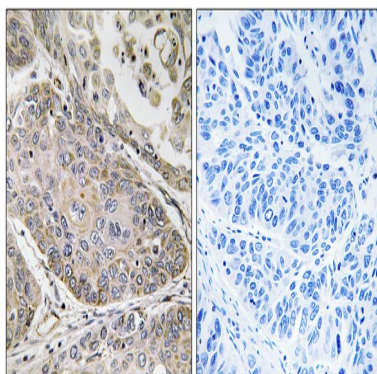


catalytic activity:Phosphatidylcholine + H(2)O = 1-acylglycerophosphocholine + a carboxylate.,domain:The N-terminal C2 domain associates with lipid membranes and mediates its regulation by presenting the active site to its substrate in response to elevations of cytosolic Ca(2+).,enzyme regulation:Stimulated by cytosolic Ca(2+).,function:Calcium-dependent phospholipase A2 that selectively hydrolyzes glycerophospholipids in the sn-2 position.,similarity:Contains 1 C2 domain.,similarity:Contains 1 PLA2c domain.,subcellular location:Translocates to lysosomal membranes in a calcium-dependent fashion.,catalytic activity:Phosphatidylcholine + H(2)O = 1-acylglycerophosphocholine + a carboxylate.,domain:The N-terminal C2 domain associates with lipid membranes and mediates its regulation by presenting the active site to its substrate in response to elevations of cytosolic Ca(2+).,enzyme regulation:Stimulated by cytosolic Ca(2+).,function:Calcium-dependent phospholipase A2 that selectively hydrolyzes glycerophospholipids in the sn-2 position.,similarity:Contains 1 C2 domain.,similarity:Contains 1 PLA2c domain.,subcellular location:Translocates to lysosomal membranes in a calcium-dependent fashion.,

Research Area

Glycerophospholipid metabolism;Ether lipid metabolism;Arachidonic acid metabolism;Linoleic acid metabolism;alpha-Linolenic acid metabolism;MAPK_ERK_Growth;MAPK_G_Protein;Vascular smooth muscle contraction;VEGF;Fc epsilon RI;Fc gamma R-mediated phagocytosis;Long-term depression;GnRH;

Image Data



Immunohistochemistry analysis of paraffin-embedded human lung carcinoma, using PLA2G4E Antibody. The picture on the right is blocked with the synthesized peptide.

Note

For research use only.