

Summary

Production Name	cPLA2- δ Rabbit Polyclonal Antibody
Description	Rabbit Polyclonal Antibody
Host	Rabbit
Application	IHC,ELISA
Reactivity	Human,Rat,Mouse

Performance

Conjugation	Unconjugated
Modification	Unmodified
Isotype	IgG
Clonality	Polyclonal
Form	Liquid
Storage	Store at 4°C short term. Aliquot and store at -20°C long term. Avoid freeze/thaw cycles.
Buffer	Liquid in PBS containing 50% glycerol, 0.5% BSA and 0.02% New type preservative N.
Purification	Affinity purification

Immunogen

Gene Name	PLA2G4D
Alternative Names	PLA2G4D; Cytosolic phospholipase A2 delta; cPLA2-delta; Phospholipase A2 group IVD
Gene ID	283748.0
SwissProt ID	Q86XP0.The antiserum was produced against synthesized peptide derived from human PLA2G4D. AA range:531-580

Application

Dilution Ratio	IHC 1:100-1:300 ELISA: 1:40000
Molecular Weight	

Background

The phospholipase A2 enzyme family, including PLA2G4D, catalyze the hydrolysis of glycerophospholipids at the sn-2

Product Name: cPLA2- δ Rabbit Polyclonal Antibody
Catalog #: APRab09316

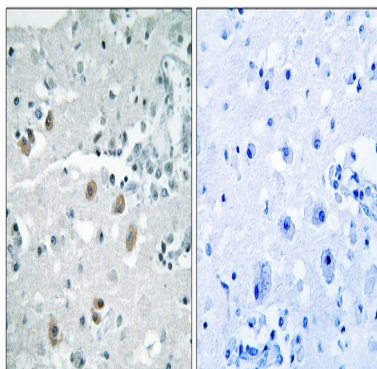


position and then liberate free fatty acids and lysophospholipids (Chiba et al., 2004 [PubMed 14709560]).[supplied by OMIM, Jun 2009],catalytic activity:Phosphatidylcholine + H(2)O = 1-acylglycerophosphocholine + a carboxylate.,domain:The N-terminal C2 domain associates with lipid membranes and mediates its regulation by presenting the active site to its substrate in response to elevations of cytosolic Ca(2+).,enzyme regulation:Stimulated by cytosolic Ca(2+).,function:Calcium-dependent phospholipase A2 that selectively hydrolyzes glycerophospholipids in the sn-2 position. Not arachidonic acid-specific but has linoleic acid-specific activity. May play a role in inflammation in psoriatic lesions.,similarity:Contains 1 C2 domain.,similarity:Contains 1 PLA2c domain.,subcellular location:Translocates to membrane vesicles in a calcium-dependent fashion. Translocates to perinuclear regions upon ionomycin stimulation.,tissue specificity:Expressed in stratified squamous epithelia, such as those in skin and cervix, but not in other tissues. Strongly expressed in the upper spinous layer of the psoriatic epidermis, expressed weakly and discontinuously in atopic dermatitis and mycosis fungoides, and not detected in the epidermis of normal skin.,

Research Area

Fc gamma R-mediated phagocytosis;

Image Data



Immunohistochemistry analysis of paraffin-embedded human brain, using PLA2G4D Antibody. The picture on the right is blocked with the synthesized peptide.

Note

For research use only.