

---

## Summary

<b>Production Name</b>	cPLA2- $\gamma$ Rabbit Polyclonal Antibody
<b>Description</b>	Rabbit Polyclonal Antibody
<b>Host</b>	Rabbit
<b>Application</b>	WB,ELISA
<b>Reactivity</b>	Human,Rat,Mouse

## Performance

<b>Conjugation</b>	Unconjugated
<b>Modification</b>	Unmodified
<b>Isotype</b>	IgG
<b>Clonality</b>	Polyclonal
<b>Form</b>	Liquid
<b>Storage</b>	Store at 4°C short term. Aliquot and store at -20°C long term. Avoid freeze/thaw cycles.
<b>Buffer</b>	Liquid in PBS containing 50% glycerol, 0.5% BSA and 0.02% New type preservative N.
<b>Purification</b>	Affinity purification

## Immunogen

<b>Gene Name</b>	PLA2G4C
<b>Alternative Names</b>	PLA2G4C; Cytosolic phospholipase A2 gamma; cPLA2-gamma; Phospholipase A2 group IVC
<b>Gene ID</b>	8605.0
<b>SwissProt ID</b>	Q9UP65.The antiserum was produced against synthesized peptide derived from human PLA2G4C. AA range:301-350

## Application

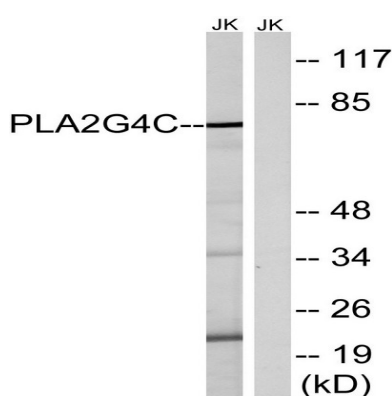
<b>Dilution Ratio</b>	WB 1:500 - 1:2000. ELISA: 1:20000
<b>Molecular Weight</b>	70kD

## Background

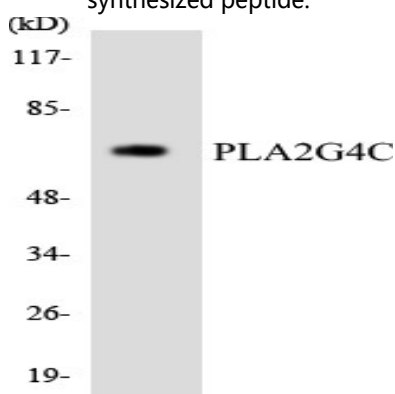
This gene encodes a protein which is a member of the phospholipase A2 enzyme family which hydrolyzes glycerophospholipids to produce free fatty acids and lysophospholipids, both of which serve as precursors in the production of signaling molecules. The encoded protein has been shown to be a calcium-independent and membrane bound enzyme. Multiple transcript variants encoding different isoforms have been found for this gene. [provided by RefSeq, Apr 2009], catalytic activity: Phosphatidylcholine + H<sub>2</sub>O = 1-acylglycerophosphocholine + a carboxylate., enzyme regulation: Not regulated by calcium., function: Has a preference for arachidonic acid at the sn-2 position of phosphatidylcholine as compared with palmitic acid., similarity: Contains 1 PLA2c domain., tissue specificity: Highly expressed in heart and skeletal muscle.,

## Research Area

## Image Data



Western blot analysis of lysates from Jurkat cells, using PLA2G4C Antibody. The lane on the right is blocked with the synthesized peptide.



Western blot analysis of the lysates from HeLa cells using PLA2G4C antibody.

**Product Name: cPLA2- $\gamma$  Rabbit Polyclonal Antibody**  
**Catalog #: APRab09315**



---

**Note**

For research use only.