
Summary

Production Name	CPA5 Rabbit Polyclonal Antibody
Description	Rabbit Polyclonal Antibody
Host	Rabbit
Application	WB,ELISA
Reactivity	Human,Mouse

Performance

Conjugation	Unconjugated
Modification	Unmodified
Isotype	IgG
Clonality	Polyclonal
Form	Liquid
Storage	Store at 4°C short term. Aliquot and store at -20°C long term. Avoid freeze/thaw cycles.
Buffer	Liquid in PBS containing 50% glycerol, 0.5% BSA and 0.02% New type preservative N.
Purification	Affinity purification

Immunogen

Gene Name	CPA5
Alternative Names	CPA5; Carboxypeptidase A5
Gene ID	93979.0
SwissProt ID	Q8WXQ8.The antiserum was produced against synthesized peptide derived from human CPA5. AA range:91-140

Application

Dilution Ratio	WB 1:500 - 1:2000. ELISA: 1:20000
Molecular Weight	50kD

Background

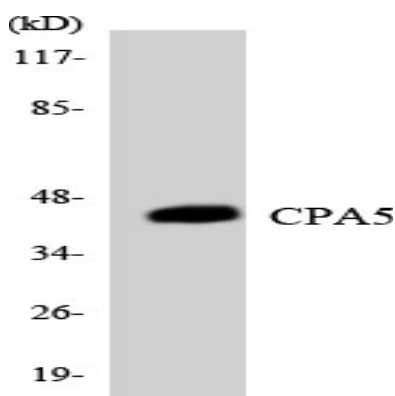
Product Name: CPA5 Rabbit Polyclonal Antibody
Catalog #: APRab09307



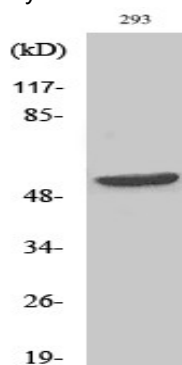
Carboxypeptidases have functions ranging from digestion of food to selective biosynthesis of neuroendocrine peptides. Members of the A/B subfamily of carboxypeptidases, such as CPA5, contain an approximately 90-amino acid pro region that assists in the folding of the active carboxypeptidase domain. Cleavage of the pro region activates the enzyme (Wei et al., 2002 [PubMed 11836249]).[supplied by OMIM, Mar 2008],catalytic activity:Release of a C-terminal amino acid, but little or no action with -Asp, -Glu, -Arg, -Lys or -Pro.,cofactor:Binds 1 zinc ion per subunit.,similarity:Belongs to the peptidase M14 family.,tissue specificity:Expression is very low or not detectable.,

Research Area

Image Data



Western blot analysis of the lysates from COLO205 cells using CPA5 antibody.



Western Blot analysis of various cells using CPA5 Polyclonal Antibody

Note

For research use only.