
Summary

Production Name	CPA1 Rabbit Polyclonal Antibody
Description	Rabbit Polyclonal Antibody
Host	Rabbit
Application	WB,ELISA
Reactivity	Human,Rat,Mouse

Performance

Conjugation	Unconjugated
Modification	Unmodified
Isotype	IgG
Clonality	Polyclonal
Form	Liquid
Storage	Store at 4°C short term. Aliquot and store at -20°C long term. Avoid freeze/thaw cycles.
Buffer	Liquid in PBS containing 50% glycerol, 0.5% BSA and 0.02% New type preservative N.
Purification	Affinity purification

Immunogen

Gene Name	CPA1
Alternative Names	CPA1; CPA; Carboxypeptidase A1
Gene ID	1357.0
SwissProt ID	P15085.The antiserum was produced against synthesized peptide derived from human Carboxypeptidase A1. AA range:301-350

Application

Dilution Ratio	WB 1:500 - 1:2000. ELISA: 1:40000
Molecular Weight	47kD

Background

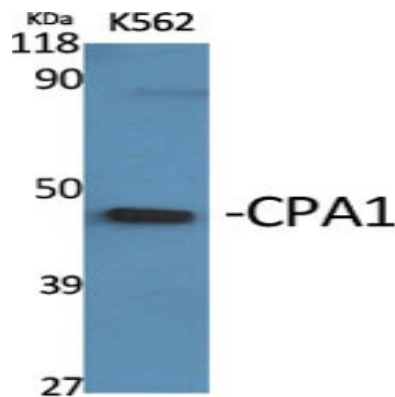
Product Name: CPA1 Rabbit Polyclonal Antibody
Catalog #: APRab09306



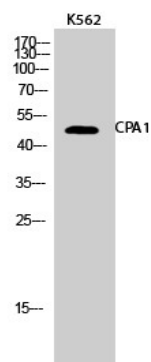
This gene encodes a member of the carboxypeptidase A family of zinc metalloproteases. This enzyme is produced in the pancreas and preferentially cleaves C-terminal branched-chain and aromatic amino acids from dietary proteins. This gene and several family members are present in a gene cluster on chromosome 7. Mutations in this gene may be linked to chronic pancreatitis, while elevated protein levels may be associated with pancreatic cancer. [provided by RefSeq, Jan 2015],catalytic activity:Release of a C-terminal amino acid, but little or no action with -Asp, -Glu, -Arg, -Lys or -Pro.,cofactor:Binds 1 zinc ion per subunit.,similarity:Belongs to the peptidase M14 family.,subunit:Monomer. May form a complex with proelastase 2.,

Research Area

Image Data



Western Blot analysis of various cells using CPA1 Polyclonal Antibody



Western Blot analysis of K562 cells using CPA1 Polyclonal Antibody

Note

For research use only.