

Product Name: CP250 Rabbit Polyclonal Antibody
Catalog #: APRab09293



Summary

Production Name	CP250 Rabbit Polyclonal Antibody
Description	Rabbit Polyclonal Antibody
Host	Rabbit
Application	WB,ELISA
Reactivity	Human,Rat,Mouse

Performance

Conjugation	Unconjugated
Modification	Unmodified
Isotype	IgG
Clonality	Polyclonal
Form	Liquid
Storage	Store at 4°C short term. Aliquot and store at -20°C long term. Avoid freeze/thaw cycles.
Buffer	Liquid in PBS containing 50% glycerol, and 0.02% New type preservative N.
Purification	Affinity purification

Immunogen

Gene Name	CEP250 CEP2 CNAP1
Alternative Names	
Gene ID	11190.0
SwissProt ID	Q9BV73.Synthesized peptide derived from part region of human protein

Application

Dilution Ratio	IHC 1:50-300
Molecular Weight	268kD

Background

centrosomal protein 250(CEP250) Homo sapiens This gene encodes a core centrosomal protein required for centriole-centriole cohesion during interphase of the cell cycle. The encoded protein dissociates from the centrosomes when

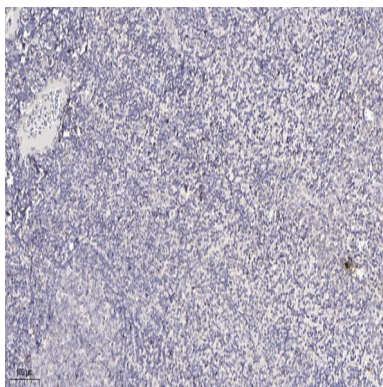
Product Name: CP250 Rabbit Polyclonal Antibody
Catalog #: APRab09293



parental centrioles separate at the beginning of mitosis. The protein associates with and is phosphorylated by NIMA-related kinase 2, which is also associated with the centrosome. Alternative splicing results in multiple transcript variants encoding different isoforms. [provided by RefSeq, Dec 2015],disease:Antibodies against CEP2 are present in sera from patients with autoimmune diseases that developed autoantibodies against centrosomal proteins.,function:Probably plays an important role in centrosome cohesion during interphase.,PTM:Differentially phosphorylated during cell cycle. Phosphorylation may regulate association/dissociation from centrosome. During M phase of mitosis, C-terminal part is phosphorylated by NEK2, suggesting that it may trigger the dissociation from the mitotic centrosome. Dephosphorylated in vitro by the PP1 phosphatase.,subcellular location:Component of the core centrosome. In interphase cells, it specifically associates with the proximal ends of both mother and daughter centrioles. Associates with the centrosome in interphase cells. In mitotic cells, it dissociates from the mitotic spindle poles. At the end of cell division, it reaccumulates at centrosomes. In photoreceptors, found at the proximal ends of basal bodies.,subunit:Monomer and homodimer (Probable). Interacts with CROCC/rootletin (By similarity). Forms a complex in vitro with both NEK2 kinase and the PPP1CC catalytic subunit of protein phosphatase 1 (PP1),,tissue specificity:Ubiquitously and weakly expressed.,

Research Area

Image Data



Immunohistochemical analysis of paraffin-embedded human tonsil. 1, Antibody was diluted at 1:200 (4° overnight) . 2, Tris-EDTA,pH9.0 was used for antigen retrieval. 3,Secondary antibody was diluted at 1:200 (room temperature, 30min) .

Note

For research use only.