

---

## Summary

<b>Production Name</b>	COX6c Rabbit Polyclonal Antibody
<b>Description</b>	Rabbit Polyclonal Antibody
<b>Host</b>	Rabbit
<b>Application</b>	IF, WB, ELISA
<b>Reactivity</b>	Human, Mouse, Rat

## Performance

<b>Conjugation</b>	Unconjugated
<b>Modification</b>	Unmodified
<b>Isotype</b>	IgG
<b>Clonality</b>	Polyclonal
<b>Form</b>	Liquid
<b>Storage</b>	Store at 4°C short term. Aliquot and store at -20°C long term. Avoid freeze/thaw cycles.
<b>Buffer</b>	Liquid in PBS containing 50% glycerol, 0.5% BSA and 0.02% New type preservative N.
<b>Purification</b>	Affinity purification

## Immunogen

<b>Gene Name</b>	COX6C
<b>Alternative Names</b>	COX6C; Cytochrome c oxidase subunit 6C; Cytochrome c oxidase polypeptide VIc
<b>Gene ID</b>	1345.0
<b>SwissProt ID</b>	P09669. The antiserum was produced against synthesized peptide derived from human COX6C. AA range: 11-60

## Application

<b>Dilution Ratio</b>	WB 1:500 - 1:2000. IF 1:200 - 1:1000. ELISA: 1:20000. Not yet tested in other applications.
<b>Molecular Weight</b>	32kD

**Product Name: COX6c Rabbit Polyclonal Antibody**  
**Catalog #: APRab09279**



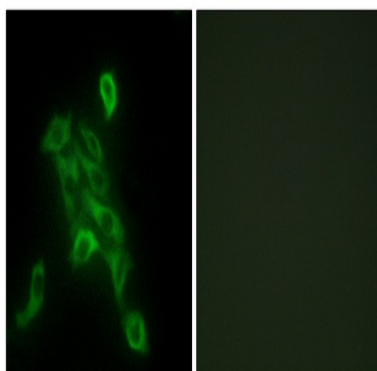
## Background

Cytochrome c oxidase, the terminal enzyme of the mitochondrial respiratory chain, catalyzes the electron transfer from reduced cytochrome c to oxygen. It is a heteromeric complex consisting of 3 catalytic subunits encoded by mitochondrial genes and multiple structural subunits encoded by nuclear genes. The mitochondrially-encoded subunits function in electron transfer, and the nuclear-encoded subunits may be involved in the regulation and assembly of the complex. This nuclear gene encodes subunit VIc, which has 77% amino acid sequence identity with mouse subunit VIc. This gene is up-regulated in prostate cancer cells. A pseudogene has been found on chromosomes 16p12. [provided by RefSeq, Jul 2010],function:This protein is one of the nuclear-coded polypeptide chains of cytochrome c oxidase, the terminal oxidase in mitochondrial electron transport.,similarity:Belongs to the cytochrome c oxidase subunit 6c family.,

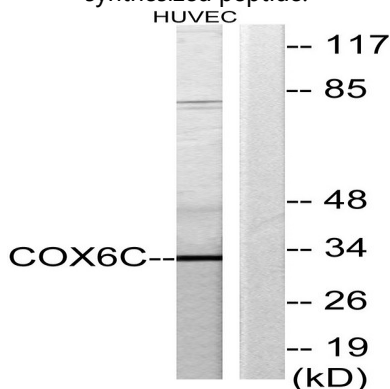
## Research Area

Oxidative phosphorylation;Cardiac muscle contraction;Alzheimer's disease;Parkinson's disease;Huntington's disease;

## Image Data

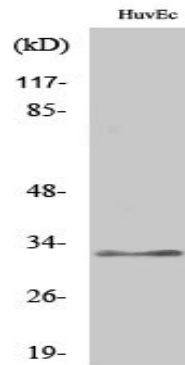


Immunofluorescence analysis of HepG2 cells, using COX6C Antibody. The picture on the right is blocked with the synthesized peptide.



Western blot analysis of lysates from HUVEC cells, using COX6C Antibody. The lane on the right is blocked with the synthesized peptide.

**Product Name: COX6c Rabbit Polyclonal Antibody**  
**Catalog #: APRab09279**



Western Blot analysis of various cells using COX6c Polyclonal Antibody

**Note**

For research use only.