

Summary

Production Name	COX6B2 Rabbit Polyclonal Antibody
Description	Rabbit Polyclonal Antibody
Host	Rabbit
Application	WB,ELISA
Reactivity	Human,Rat,Mouse

Performance

Conjugation	Unconjugated
Modification	Unmodified
Isotype	IgG
Clonality	Polyclonal
Form	Liquid
Storage	Store at 4°C short term. Aliquot and store at -20°C long term. Avoid freeze/thaw cycles.
Buffer	Liquid in PBS containing 50% glycerol, 0.5% BSA and 0.02% New type preservative N.
Purification	Affinity purification

Immunogen

Gene Name	COX6B2 Cytochrome c oxidase subunit 6B2 (Cancer/testis antigen 59;CT59;Cytochrome c oxidase subunit VIb isoform 2;COX VIb-2;Cytochrome c oxidase subunit VIb, testis-specific isoform)
Alternative Names	
Gene ID	125965.0
SwissProt ID	Q6YFQ2.Synthesized peptide derived from human COX6B2 AA range: 40-120

Application

Dilution Ratio	IHC 1:50-200 ELISA(peptide)1:5000-20000
Molecular Weight	

Background

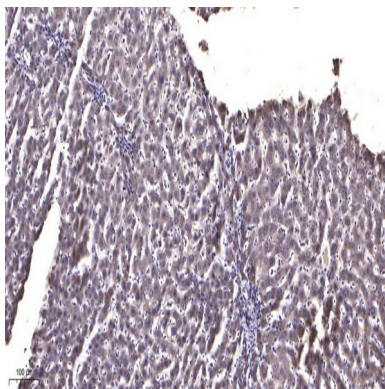
Product Name: COX6B2 Rabbit Polyclonal Antibody
Catalog #: APRab09278



function:Connects the two COX monomers into the physiological dimeric form.,similarity:Belongs to the cytochrome c oxidase subunit 6B family.,tissue specificity:Testis specific. Weak expression in thymus and heart. Expressed in cancer cell lines.,function:Connects the two COX monomers into the physiological dimeric form.,similarity:Belongs to the cytochrome c oxidase subunit 6B family.,tissue specificity:Testis specific. Weak expression in thymus and heart. Expressed in cancer cell lines.,

Research Area

Image Data



Immunohistochemical analysis of paraffin-embedded human liver cancer. 1, Antibody was diluted at 1:200 (4° overnight) .
2, Tris-EDTA,pH9.0 was used for antigen retrieval. 3,Secondary antibody was diluted at 1:200 (room temperature, 45min) .

Note

For research use only.