

Summary

| | |
|------------------------|-----------------------------------|
| Production Name | COX4I2 Rabbit Polyclonal Antibody |
| Description | Rabbit Polyclonal Antibody |
| Host | Rabbit |
| Application | IF, WB, ELISA |
| Reactivity | Human, Mouse, Rat |

Performance

| | |
|---------------------|--|
| Conjugation | Unconjugated |
| Modification | Unmodified |
| Isotype | IgG |
| Clonality | Polyclonal |
| Form | Liquid |
| Storage | Store at 4°C short term. Aliquot and store at -20°C long term. Avoid freeze/thaw cycles. |
| Buffer | Liquid in PBS containing 50% glycerol, 0.5% BSA and 0.02% New type preservative N. |
| Purification | Affinity purification |

Immunogen

| | |
|--------------------------|--|
| Gene Name | COX4I2 |
| Alternative Names | COX4I2; COX4L2; Cytochrome c oxidase subunit 4 isoform 2; mitochondrial; Cytochrome c oxidase subunit IV isoform 2; COX IV-2 |
| Gene ID | 84701.0 |
| SwissProt ID | Q96KJ9. The antiserum was produced against synthesized peptide derived from human COX42. AA range:31-80 |

Application

| | |
|-------------------------|---|
| Dilution Ratio | WB 1:500 - 1:2000. IF 1:200 - 1:1000. ELISA: 1:10000. Not yet tested in other applications. |
| Molecular Weight | 20kD |

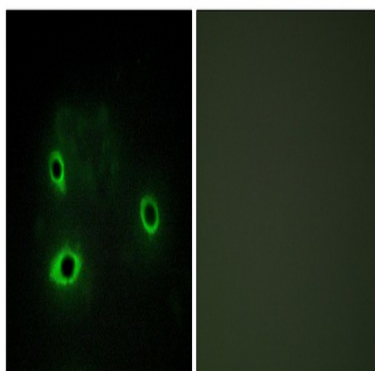
Background

Cytochrome c oxidase (COX), the terminal enzyme of the mitochondrial respiratory chain, catalyzes the electron transfer from reduced cytochrome c to oxygen. It is a heteromeric complex consisting of 3 catalytic subunits encoded by mitochondrial genes and multiple structural subunits encoded by nuclear genes. The mitochondrially-encoded subunits function in electron transfer, and the nuclear-encoded subunits may be involved in the regulation and assembly of the complex. This nuclear gene encodes isoform 2 of subunit IV. Isoform 1 of subunit IV is encoded by a different gene, however, the two genes show a similar structural organization. Subunit IV is the largest nuclear encoded subunit which plays a pivotal role in COX regulation. [provided by RefSeq, Jul 2008],function:This protein is one of the nuclear-coded polypeptide chains of cytochrome c oxidase, the terminal oxidase in mitochondrial electron transport.,similarity:Belongs to the cytochrome c oxidase IV family.,tissue specificity:Highly expressed in lung.,

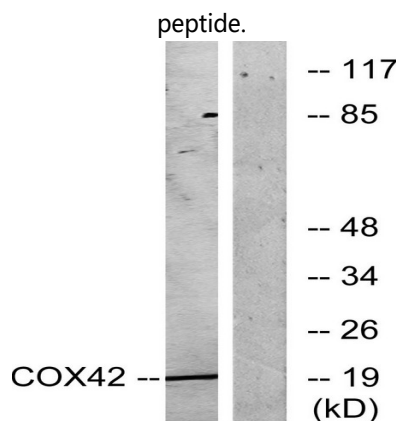
Research Area

Oxidative phosphorylation;Cardiac muscle contraction;Alzheimer's disease;Parkinson's disease;Huntington's disease;

Image Data



Immunofluorescence analysis of COS7 cells, using COX42 Antibody. The picture on the right is blocked with the synthesized

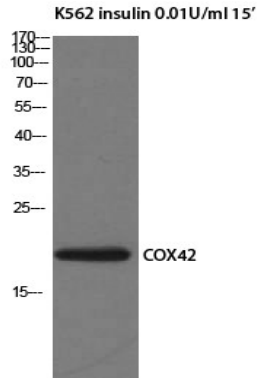


Western blot analysis of lysates from K562 cells, treated with insulin 0.01U/ml 15', using COX42 Antibody. The lane on the

Product Name: COX4I2 Rabbit Polyclonal Antibody
Catalog #: APRab09275



right is blocked with the synthesized peptide.



Western Blot analysis of K562 insulin 0.01U/ml 15 ' cells using COX4I2 Polyclonal Antibody

Note

For research use only.