

Summary

Production Name	Contactin 2 Rabbit Polyclonal Antibody
Description	Rabbit Polyclonal Antibody
Host	Rabbit
Application	WB
Reactivity	Human,Mouse,Rat

Performance

Conjugation	Unconjugated
Modification	Unmodified
Isotype	IgG
Clonality	Polyclonal
Form	Liquid
Storage	Store at 4°C short term. Aliquot and store at -20°C long term. Avoid freeze/thaw cycles.
Buffer	Liquid in PBS containing 50% glycerol, 0.5% BSA and 0.02% New type preservative N.
Purification	Affinity purification

Immunogen

Gene Name	CNTN2
Alternative Names	CNTN2; AXT; TAG1; TAX1; Contactin-2; Axonal glycoprotein TAG-1; Axonin-1; Transient axonal glycoprotein 1; TAX-1
Gene ID	6900.0
SwissProt ID	Q02246.The antiserum was produced against synthesized peptide derived from human CNTN2. AA range:111-160

Application

Dilution Ratio	WB 1:500-1:2000. ELISA: 1:40000.
Molecular Weight	120kD

Background

Product Name: Contactin 2 Rabbit Polyclonal Antibody
Catalog #: APRab09241

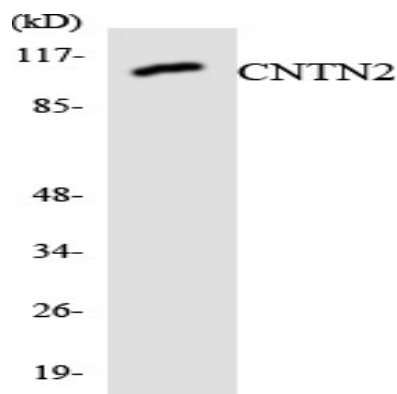


This gene encodes a member of the contactin family of proteins, part of the immunoglobulin superfamily of cell adhesion molecules. The encoded glycosylphosphatidylinositol (GPI)-anchored neuronal membrane protein plays a role in the proliferation, migration, and axon guidance of neurons of the developing cerebellum. A mutation in this gene may be associated with adult myoclonic epilepsy. [provided by RefSeq, Sep 2016],function:May play a role in the initial growth and guidance of axons. May be involved in cell adhesion.,similarity:Belongs to the immunoglobulin superfamily. Contactin family.,similarity:Contains 4 fibronectin type-III domains.,similarity:Contains 6 Ig-like C2-type (immunoglobulin-like) domains.,subcellular location:Attached to the neuronal membrane by a GPI-anchor and is also released from neurons.,

Research Area

Cell adhesion molecules (CAMs);

Image Data



Western blot analysis of the lysates from HUVEC cells using CNTN2 antibody.

Note

For research use only.