

---

## Summary

<b>Production Name</b>	Connexin-40 Rabbit Polyclonal Antibody
<b>Description</b>	Rabbit Polyclonal Antibody
<b>Host</b>	Rabbit
<b>Application</b>	WB,ELISA
<b>Reactivity</b>	Human,Mouse,Rat

## Performance

<b>Conjugation</b>	Unconjugated
<b>Modification</b>	Unmodified
<b>Isotype</b>	IgG
<b>Clonality</b>	Polyclonal
<b>Form</b>	Liquid
<b>Storage</b>	Store at 4°C short term. Aliquot and store at -20°C long term. Avoid freeze/thaw cycles.
<b>Buffer</b>	Liquid in PBS containing 50% glycerol, 0.5% BSA and 0.02% New type preservative N.
<b>Purification</b>	Affinity purification

## Immunogen

<b>Gene Name</b>	GJA5
<b>Alternative Names</b>	GJA5; Gap junction alpha-5 protein; Connexin-40; Cx40
<b>Gene ID</b>	2702.0
<b>SwissProt ID</b>	P36382.The antiserum was produced against synthesized peptide derived from the N-terminal region of human GJA5. AA range:21-70

## Application

<b>Dilution Ratio</b>	WB 1:500 - 1:2000. ELISA: 1:20000
<b>Molecular Weight</b>	39kD

## Background

---

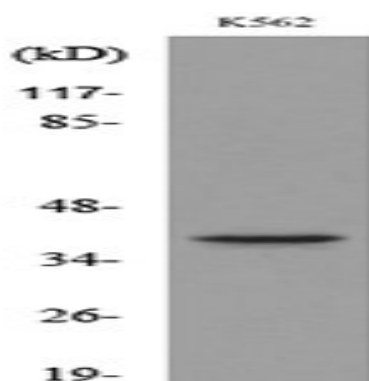
**Product Name: Connexin-40 Rabbit Polyclonal Antibody**  
**Catalog #: APRab09238**



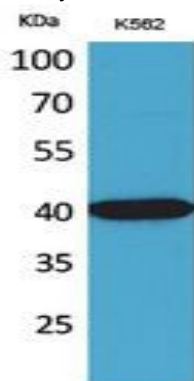
This gene is a member of the connexin gene family. The encoded protein is a component of gap junctions, which are composed of arrays of intercellular channels that provide a route for the diffusion of low molecular weight materials from cell to cell. Mutations in this gene may be associated with atrial fibrillation. Alternatively spliced transcript variants encoding the same isoform have been described. [provided by RefSeq, Jul 2008],disease:Defects in GJA5 are a cause of idiopathic atrial fibrillation [MIM:108770]. Atrial fibrillation (AF) is the most common cardiac arrhythmia and is characterized by rapid and irregular activation of the atrium.,function:One gap junction consists of a cluster of closely packed pairs of transmembrane channels, the connexons, through which materials of low MW diffuse from one cell to a neighboring cell.,similarity:Belongs to the connexin family. Alpha-type (group II) subfamily.,subunit:A connexon is composed of a hexamer of connexins.,

## Research Area

## Image Data



Western blot analysis of lysate from K562 cells, using GJA5 Antibody.



Western Blot analysis of K562 cells using Connexin-40 Polyclonal Antibody.. Secondary antibody was diluted at 1:20000

## Note

For research use only.

**Product Name: Connexin-40 Rabbit Polyclonal Antibody**  
**Catalog #: APRab09238**

---

