

**Product Name: Connexin 31.3 Rabbit Polyclonal Antibody**  
**Catalog #: APRab09229**

---

## Summary

<b>Production Name</b>	Connexin 31.3 Rabbit Polyclonal Antibody
<b>Description</b>	Rabbit Polyclonal Antibody
<b>Host</b>	Rabbit
<b>Application</b>	WB
<b>Reactivity</b>	Human,Rat,Mouse

## Performance

<b>Conjugation</b>	Unconjugated
<b>Modification</b>	Unmodified
<b>Isotype</b>	IgG
<b>Clonality</b>	Polyclonal
<b>Form</b>	Liquid
<b>Storage</b>	Store at 4°C short term. Aliquot and store at -20°C long term. Avoid freeze/thaw cycles.
<b>Buffer</b>	Liquid in PBS containing 50% glycerol, 0.5% BSA and 0.02% New type preservative N.
<b>Purification</b>	Affinity purification

## Immunogen

<b>Gene Name</b>	GJC3
<b>Alternative Names</b>	GJC3; GJE1; Gap junction gamma-3 protein; Connexin-30.2; Cx30.2; Connexin-31.3; Cx31.3; Gap junction epsilon-1 protein
<b>Gene ID</b>	349149.0
<b>SwissProt ID</b>	Q8NFK1.The antiserum was produced against synthesized peptide derived from human GJC3. AA range:151-200

## Application

<b>Dilution Ratio</b>	WB 1:500-1:2000. ELISA: 1:40000.
<b>Molecular Weight</b>	28kD

**Product Name: Connexin 31.3 Rabbit Polyclonal Antibody**  
**Catalog #: APRab09229**

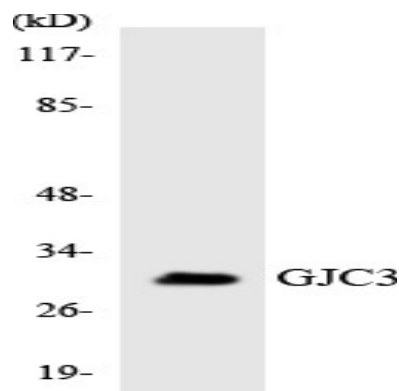
---

## Background

This gene encodes a gap junction protein. The encoded protein, also known as a connexin, plays a role in formation of gap junctions, which provide direct connections between neighboring cells. Mutations in this gene have been reported to be associated with nonsyndromic hearing loss.[provided by RefSeq, Feb 2010],function:One gap junction consists of a cluster of closely packed pairs of transmembrane channels, the connexons, through which materials of low MW diffuse from one cell to a neighboring cell.,similarity:Belongs to the connexin family. Gamma-type subfamily.,subunit:A connexon is composed of a hexamer of connexins.,tissue specificity:CNS specific. Expression is restricted to brain, spinal cord, and sciatic nerve. According to PubMed:12881038 expression is abundant in skeletal muscle, liver, and heart, and to a minor degree in pancreas and kidney.,

## Research Area

## Image Data



Western blot analysis of the lysates from K562 cells using GJC3 antibody.

## Note

For research use only.