
Summary

Production Name	Connexin 25 Rabbit Polyclonal Antibody
Description	Rabbit Polyclonal Antibody
Host	Rabbit
Application	WB,ELISA
Reactivity	Human,Rat,Mouse

Performance

Conjugation	Unconjugated
Modification	Unmodified
Isotype	IgG
Clonality	Polyclonal
Form	Liquid
Storage	Store at 4°C short term. Aliquot and store at -20°C long term. Avoid freeze/thaw cycles.
Buffer	Liquid in PBS containing 50% glycerol, 0.5% BSA and 0.02% New type preservative N.
Purification	Affinity purification

Immunogen

Gene Name	GJB7
Alternative Names	GJB7; CX25; Gap junction beta-7 protein; Connexin-25; Cx25
Gene ID	375519.0
SwissProt ID	Q6PEY0.The antiserum was produced against synthesized peptide derived from human GJB7. AA range:21-70

Application

Dilution Ratio	WB 1:500 - 1:2000. ELISA: 1:10000. Not yet tested in other applications.
Molecular Weight	24kD

Background

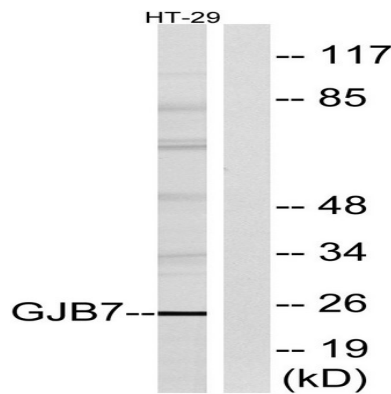
Product Name: Connexin 25 Rabbit Polyclonal Antibody
Catalog #: APRab09228



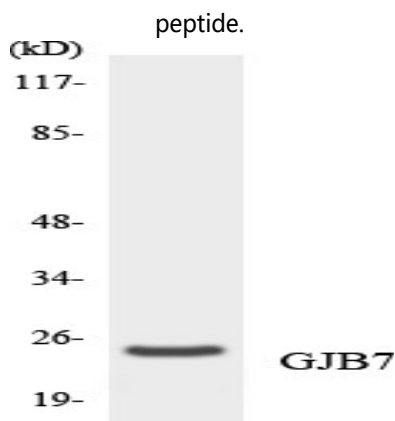
Connexins, such as GJB7, are involved in the formation of gap junctions, intercellular conduits that directly connect the cytoplasm of contacting cells. Each gap junction channel is formed by docking of 2 hemichannels, each of which contains 6 connexin subunits (Sohl et al., 2003 [PubMed 12881038]). [supplied by OMIM, Mar 2008], function: One gap junction consists of a cluster of closely packed pairs of transmembrane channels, the connexons, through which materials of low MW diffuse from one cell to a neighboring cell., similarity: Belongs to the connexin family. Beta-type (group I) subfamily., subunit: A connexon is composed of a hexamer of connexins., tissue specificity: Weakly expressed in placenta.,

Research Area

Image Data

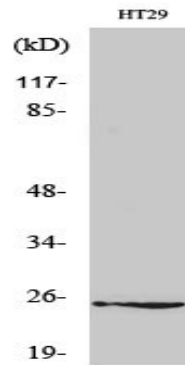


Western blot analysis of lysates from HT-29 cells, using GJB7 Antibody. The lane on the right is blocked with the synthesized



Western blot analysis of the lysates from HeLa cells using GJB7 antibody.

Product Name: Connexin 25 Rabbit Polyclonal Antibody
Catalog #: APRab09228



Western Blot analysis of various cells using Connexin 25 Polyclonal Antibody diluted at 1: 500

Note

For research use only.