

Summary

Production Name	COL20A1 Rabbit Polyclonal Antibody
Description	Rabbit Polyclonal Antibody
Host	Rabbit
Application	IF,ELISA
Reactivity	Human,Mouse,Rat

Performance

Conjugation	Unconjugated
Modification	Unmodified
Isotype	IgG
Clonality	Polyclonal
Form	Liquid
Storage	Store at 4°C short term. Aliquot and store at -20°C long term. Avoid freeze/thaw cycles.
Buffer	Liquid in PBS containing 50% glycerol, 0.5% BSA and 0.02% New type preservative N.
Purification	Affinity purification

Immunogen

Gene Name	COL20A1
Alternative Names	COL20A1; KIAA1510; Collagen alpha-1(XX) chain
Gene ID	57642/1301/1289
SwissProt ID	Q9P218.The antiserum was produced against synthesized peptide derived from human Collagen XX alpha1. AA range:1151-1200

Application

Dilution Ratio	IF 1:200-1:1000. ELISA: 1:20000.
Molecular Weight	140kD

Background

COL20A1 (Collagen Type XX Alpha 1) is a Protein Coding gene. Among its related pathways are Collagen biosynthesis and

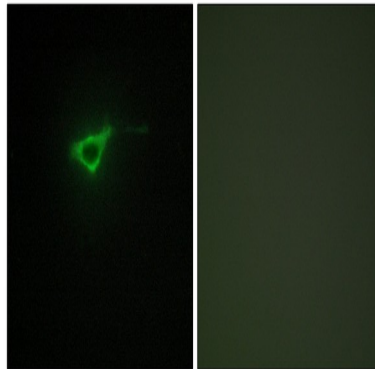
Product Name: COL20A1 Rabbit Polyclonal Antibody
Catalog #: APRab09179



modifying enzymes and ERK Signaling. An important paralog of this gene is MATN1. function:Probable collagen protein.,similarity:Contains 1 collagen-like domain.,similarity:Contains 1 TSP N-terminal (TSPN) domain.,similarity:Contains 1 VWFA domain.,similarity:Contains 6 fibronectin type-III domains.,tissue specificity:High expression in heart, lung, liver, skeletal muscle, kidney, pancreas, spleen, testis, ovary, subthalamic nucleus and fetal liver. Weak expression in other tissues tested.,

Research Area

Image Data



Immunofluorescence analysis of NIH/3T3 cells, using Collagen XX alpha1 Antibody. The picture on the right is blocked with the synthesized peptide.

Note

For research use only.