

Summary

Production Name	COL16A1 Rabbit Polyclonal Antibody
Description	Rabbit Polyclonal Antibody
Host	Rabbit
Application	IHC,ELISA
Reactivity	Human,Mouse

Performance

Conjugation	Unconjugated
Modification	Unmodified
Isotype	IgG
Clonality	Polyclonal
Form	Liquid
Storage	Store at 4°C short term. Aliquot and store at -20°C long term. Avoid freeze/thaw cycles.
Buffer	Liquid in PBS containing 50% glycerol, 0.5% BSA and 0.02% New type preservative N.
Purification	Affinity purification

Immunogen

Gene Name	COL16A1
Alternative Names	COL16A1; FP1572; Collagen alpha-1(XVI) chain
Gene ID	1307.0
SwissProt ID	Q07092.The antiserum was produced against synthesized peptide derived from human Collagen XVI alpha1. AA range:1121-1170

Application

Dilution Ratio	IHC 1:100-1:300 ELISA: 1:5000
Molecular Weight	

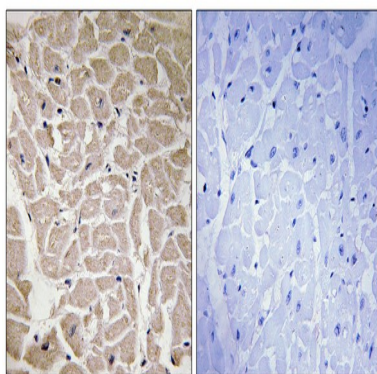
Background

This gene encodes the alpha chain of type XVI collagen, a member of the FACIT collagen family (fibril-associated collagens)

with interrupted helices). Members of this collagen family are found in association with fibril-forming collagens such as type I and II, and serve to maintain the integrity of the extracellular matrix. High levels of type XVI collagen have been found in fibroblasts and keratinocytes, and in smooth muscle and amnion. [provided by RefSeq, Jul 2008],developmental stage:Transiently elevated expression during gestation, and decrease at term.,domain:This sequence defines eighteen different domains, nine triple-helical domains (COL9 to COL1) and ten non-triple-helical domains (NC10 to NC1). The numerous interruptions in the triple helix may make this molecule either elastic or flexible.,function:Involved in mediating cell attachment and inducing integrin-mediated cellular reactions, such as cell spreading and alterations in cell morphology.,PTM:Glycosylated.,PTM:Prolines at the third position of the tripeptide repeating unit (G-X-Y) are hydroxylated in some or all of the chains.,similarity:Belongs to the fibril-associated collagens with interrupted helices (FACIT) family.,similarity:Contains 1 TSP N-terminal (TSPN) domain.,subunit:Homotrimer. Interacts with FBN1, fibronectin and integrins ITGA1/ITGB1 and ITGA2/ITGB1. Integrin ITGA1/ITGB1 binds to a unique site within COL16A1 located close to its C-terminal end between collagenous domains COL1-COL3.,tissue specificity:In papillary dermis, is a component of specialized fibrillin-1-containing microfibrils, whereas in territorial cartilage matrix, it is localized to a discrete population of thin, weakly banded collagen fibrils in association with other collagens (at the protein level). In the placenta, where it is found in the amnion, a membranous tissue lining the amniotic cavity. Within the amnion, it is found in an acellular, relatively dense layer of a complex network of reticular fibers. Also located to a fibroblast layer beneath this dense layer. Exists in tissues in association with other types of collagen.,

Research Area

Image Data



Immunohistochemistry analysis of paraffin-embedded human heart tissue, using Collagen XVI alpha1 Antibody. The picture on the right is blocked with the synthesized peptide.

Note

For research use only.

Product Name: COL16A1 Rabbit Polyclonal Antibody
Catalog #: APRab09171

