

Product Name: CNTD2 Rabbit Polyclonal Antibody
Catalog #: APRab09137



Summary

Production Name	CNTD2 Rabbit Polyclonal Antibody
Description	Rabbit Polyclonal Antibody
Host	Rabbit
Application	IHC,ELISA
Reactivity	Human,Rat,Mouse

Performance

Conjugation	Unconjugated
Modification	Unmodified
Isotype	IgG
Clonality	Polyclonal
Form	Liquid
Storage	Store at 4°C short term. Aliquot and store at -20°C long term. Avoid freeze/thaw cycles.
Buffer	Liquid in PBS containing 50% glycerol, 0.5% BSA and 0.02% New type preservative N.
Purification	Affinity purification

Immunogen

Gene Name	CNTD2
Alternative Names	CNTD2; Cyclin N-terminal domain-containing protein 2
Gene ID	79935.0
SwissProt ID	Q9H8S5.The antiserum was produced against synthesized peptide derived from human CNTD2. AA range:51-100

Application

Dilution Ratio	IHC 1:100-1:300 ELISA: 1:40000
Molecular Weight	

Background

similarity:Belongs to the cyclin family.,similarity:Contains 1 cyclin N-terminal domain.,similarity:Belongs to the cyclin

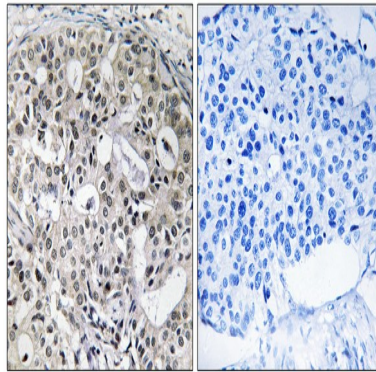
Product Name: CNTD2 Rabbit Polyclonal Antibody
Catalog #: APRab09137



family,similarity:Contains 1 cyclin N-terminal domain.,

Research Area

Image Data



Immunohistochemistry analysis of paraffin-embedded human breast carcinoma, using CNTD2 Antibody. The picture on the right is blocked with the synthesized peptide.

Note

For research use only.