

---

## Summary

<b>Production Name</b>	CNPase Rabbit Polyclonal Antibody
<b>Description</b>	Rabbit Polyclonal Antibody
<b>Host</b>	Rabbit
<b>Application</b>	IHC, WB,
<b>Reactivity</b>	Human, Mouse, Rat

## Performance

<b>Conjugation</b>	Unconjugated
<b>Modification</b>	Unmodified
<b>Isotype</b>	IgG
<b>Clonality</b>	Polyclonal
<b>Form</b>	Liquid
<b>Storage</b>	Store at 4°C short term. Aliquot and store at -20°C long term. Avoid freeze/thaw cycles.
<b>Buffer</b>	Liquid in PBS containing 50% glycerol, 0.5% BSA and 0.02% New type preservative N.
<b>Purification</b>	Affinity purification

## Immunogen

<b>Gene Name</b>	CNP
<b>Alternative Names</b>	CNP; 2'; 3'-cyclic-nucleotide 3'-phosphodiesterase; CNP; CNPase
<b>Gene ID</b>	1267.0
<b>SwissProt ID</b>	P09543. The antiserum was produced against synthesized peptide derived from human CNPase. AA range: 59-108

## Application

<b>Dilution Ratio</b>	WB 1:500 - 1:2000. IHC 1:100 - 1:300. ELISA: 1:40000..
<b>Molecular Weight</b>	47kD

## Background

---

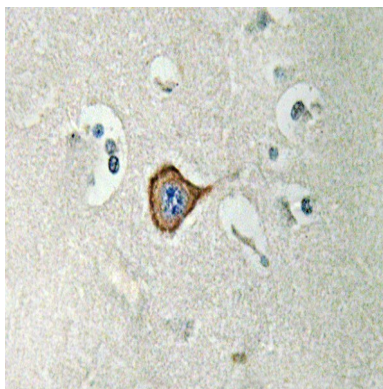
**Product Name: CNPase Rabbit Polyclonal Antibody**  
**Catalog #: APRab09132**



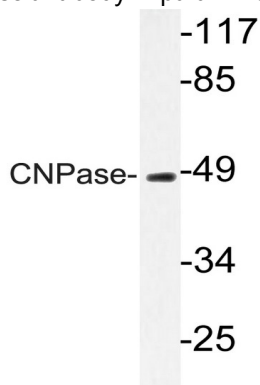
catalytic activity:Nucleoside 2',3'-cyclic phosphate + H(2)O = nucleoside 2'-phosphate.,similarity:Belongs to the cyclic nucleotide phosphodiesterase family.,subcellular location:Firmly bound to membrane structures of brain white matter. Identified by mass spectrometry in melanosome fractions from stage I to stage IV.,catalytic activity:Nucleoside 2',3'-cyclic phosphate + H(2)O = nucleoside 2'-phosphate.,similarity:Belongs to the cyclic nucleotide phosphodiesterase family.,subcellular location:Firmly bound to membrane structures of brain white matter. Identified by mass spectrometry in melanosome fractions from stage I to stage IV.,

## Research Area

## Image Data

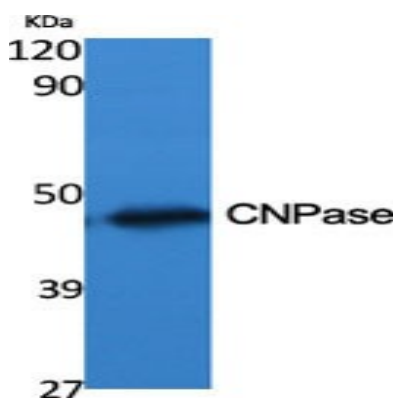


Immunohistochemistry analysis of CNPase antibody in paraffin-embedded human brain tissue.

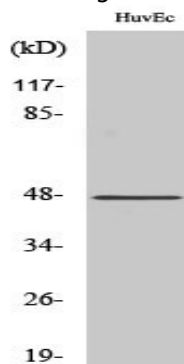


Western blot analysis of lysate from HUVEC cells, using CNPase antibody.

**Product Name: CNPase Rabbit Polyclonal Antibody**  
**Catalog #: APRab09132**



Western Blot analysis of various cells using CNPase Polyclonal Antibody diluted at 1 : 500



Western Blot analysis of MCF7 cells using CNPase Polyclonal Antibody diluted at 1 : 500

### **Note**

For research use only.