

## Summary

<b>Production Name</b>	CMTM6 Rabbit Polyclonal Antibody
<b>Description</b>	Rabbit Polyclonal Antibody
<b>Host</b>	Rabbit
<b>Application</b>	WB,IHC,ELISA
<b>Reactivity</b>	Human,Rat,Mouse

## Performance

<b>Conjugation</b>	Unconjugated
<b>Modification</b>	Unmodified
<b>Isotype</b>	IgG
<b>Clonality</b>	Polyclonal
<b>Form</b>	Liquid
<b>Storage</b>	Store at 4°C short term. Aliquot and store at -20°C long term. Avoid freeze/thaw cycles.
<b>Buffer</b>	Liquid in PBS containing 50% glycerol, 0.5% BSA and 0.02% New type preservative N.
<b>Purification</b>	Affinity purification

## Immunogen

<b>Gene Name</b>	CMTM6
<b>Alternative Names</b>	CMTM6; CKLFSF6; CKLF-like MARVEL transmembrane domain-containing protein 6; Chemokine-like factor superfamily member 6
<b>Gene ID</b>	54918.0
<b>SwissProt ID</b>	Q9NX76.The antiserum was produced against synthesized peptide derived from the C-terminal region of human CMTM6. AA range:131-180

## Application

<b>Dilution Ratio</b>	WB 1:500 - 1:2000. IHC: 1:100-1:300. ELISA: 1:20000..
<b>Molecular Weight</b>	20kD

**Product Name: CMTM6 Rabbit Polyclonal Antibody**  
**Catalog #: APRab09089**

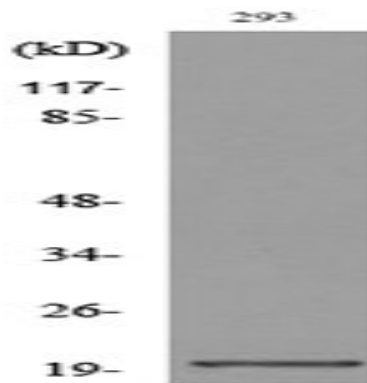


## Background

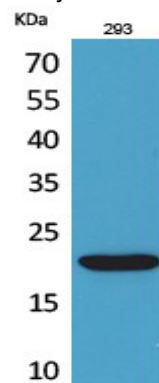
This gene belongs to the chemokine-like factor gene superfamily, a novel family that is similar to the chemokine and transmembrane 4 superfamilies. This gene is one of several chemokine-like factor genes located in a cluster on chromosome 3. This gene is widely expressed in many tissues, but the exact function of the encoded protein is unknown. [provided by RefSeq, Jul 2008],similarity:Belongs to the chemokine-like factor family.,similarity:Contains 1 MARVEL domain.,tissue specificity:Expressed in the leukocytes, placenta and testis.,

## Research Area

## Image Data

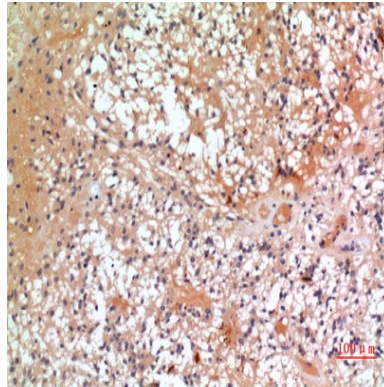


Western blot analysis of lysate from 293 cells, using CMTM6 Antibody.

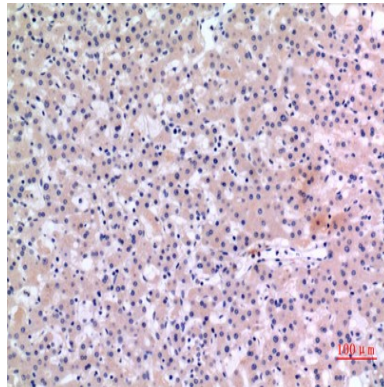


Western Blot analysis of 293 cells using CMTM6 Polyclonal Antibody.. Secondary antibody was diluted at 1:20000

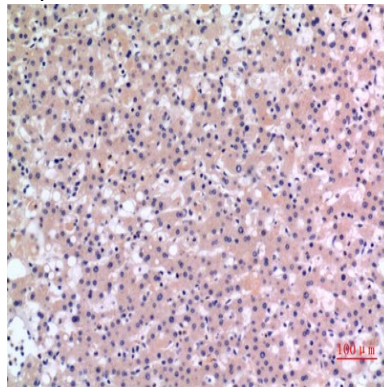
**Product Name: CMTM6 Rabbit Polyclonal Antibody**  
**Catalog #: APRab09089**



Immunohistochemical analysis of paraffin-embedded human-oophoroma, antibody was diluted at 1:100



Immunohistochemical analysis of paraffin-embedded human-liver, antibody was diluted at 1:100



Immunohistochemical analysis of paraffin-embedded human-liver, antibody was diluted at 1:100

## **Note**

For research use only.