
Summary

Production Name	CMTM4 Rabbit Polyclonal Antibody
Description	Rabbit Polyclonal Antibody
Host	Rabbit
Application	WB,IHC,ELISA
Reactivity	Human,Mouse

Performance

Conjugation	Unconjugated
Modification	Unmodified
Isotype	IgG
Clonality	Polyclonal
Form	Liquid
Storage	Store at 4°C short term. Aliquot and store at -20°C long term. Avoid freeze/thaw cycles.
Buffer	Liquid in PBS containing 50% glycerol, 0.5% BSA and 0.02% New type preservative N.
Purification	Affinity purification

Immunogen

Gene Name	CMTM4
Alternative Names	CMTM4; CKLFSF4; CKLF-like MARVEL transmembrane domain-containing protein 4; Chemokine-like factor superfamily member 4
Gene ID	146223.0
SwissProt ID	Q8IZR5.The antiserum was produced against synthesized peptide derived from human CKLF4. AA range:161-210

Application

Dilution Ratio	WB 1:500 - 1:2000. IHC-p: 1:100-300 ELISA: 1:20000.
Molecular Weight	26kD

Product Name: CMTM4 Rabbit Polyclonal Antibody
Catalog #: APRab09087

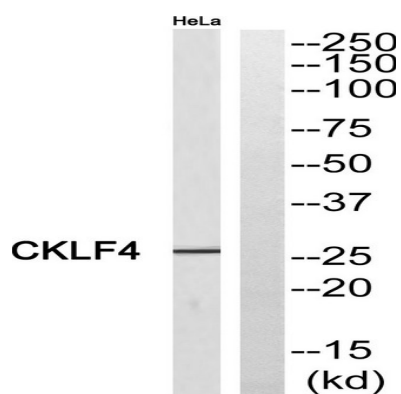


Background

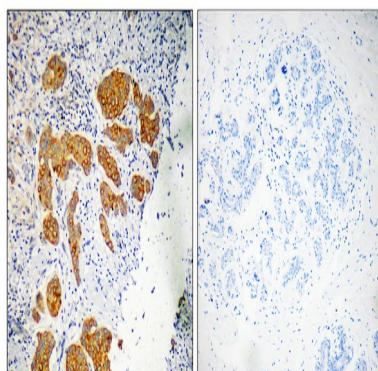
This gene belongs to the chemokine-like factor gene superfamily, a novel family that is similar to the chemokine and the transmembrane 4 superfamilies of signaling molecules. This gene is one of several chemokine-like factor genes located in a cluster on chromosome 16. Alternatively spliced transcript variants encoding different isoforms have been identified. [provided by RefSeq, Jul 2008],similarity:Belongs to the chemokine-like factor family.,similarity:Contains 1 MARVEL domain.,tissue specificity:Highly expressed in testis and prostate.,

Research Area

Image Data

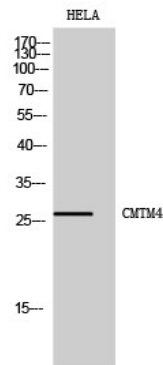


Western blot analysis of CKLF4 Antibody. The lane on the right is blocked with the CKLF4 peptide.



Immunohistochemistry analysis of paraffin-embedded human breast carcinoma, using CKLF4 Antibody. The lane on the right is blocked with the CKLF4 peptide.

Product Name: CMTM4 Rabbit Polyclonal Antibody
Catalog #: APRab09087



Western Blot analysis of HELA cells using CMTM4 Polyclonal Antibody

Note

For research use only.