

Summary

| | |
|------------------------|----------------------------------|
| Production Name | CMTM1 Rabbit Polyclonal Antibody |
| Description | Rabbit Polyclonal Antibody |
| Host | Rabbit |
| Application | IF,ELISA |
| Reactivity | Human,Rat,Mouse |

Performance

| | |
|---------------------|--|
| Conjugation | Unconjugated |
| Modification | Unmodified |
| Isotype | IgG |
| Clonality | Polyclonal |
| Form | Liquid |
| Storage | Store at 4°C short term. Aliquot and store at -20°C long term. Avoid freeze/thaw cycles. |
| Buffer | Liquid in PBS containing 50% glycerol, 0.5% BSA and 0.02% New type preservative N. |
| Purification | Affinity purification |

Immunogen

| | |
|--------------------------|--|
| Gene Name | CMTM1 |
| Alternative Names | CMTM1; CKLFSF1; CKLF-like MARVEL transmembrane domain-containing protein 1; Chemokine-like factor superfamily member 1 |
| Gene ID | 113540.0 |
| SwissProt ID | Q8IZ96.The antiserum was produced against synthesized peptide derived from human CKLF1. AA range:120-169 |

Application

| | |
|-------------------------|----------------------------------|
| Dilution Ratio | IF 1:200-1:1000. ELISA: 1:40000. |
| Molecular Weight | |

Background

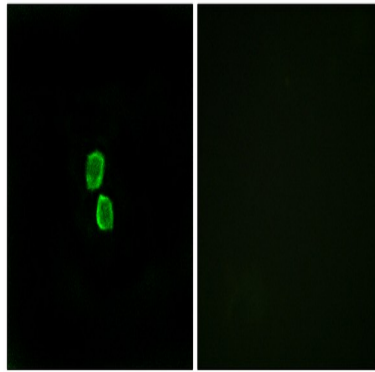
Product Name: CMTM1 Rabbit Polyclonal Antibody
Catalog #: APRab09084



This gene belongs to the chemokine-like factor gene superfamily, a novel family that is similar to the chemokine and the transmembrane 4 superfamilies of signaling molecules. The protein encoded by this gene may play an important role in testicular development. Alternatively spliced transcript variants encoding different isoforms have been identified. Naturally occurring read-through transcription occurs between this locus and the neighboring locus CKLF (chemokine-like factor). [provided by RefSeq, Feb 2011],similarity:Belongs to the chemokine-like factor family.,similarity:Contains 1 MARVEL domain.,tissue specificity:Highly expressed in testis.,

Research Area

Image Data



Immunofluorescence analysis of MCF7 cells, using CKLF1 Antibody. The picture on the right is blocked with the synthesized peptide.

Note

For research use only.