
Summary

Production Name	CLN6 Rabbit Polyclonal Antibody
Description	Rabbit Polyclonal Antibody
Host	Rabbit
Application	WB,IHC,ELISA
Reactivity	Human,Rat,Mouse

Performance

Conjugation	Unconjugated
Modification	Unmodified
Isotype	IgG
Clonality	Polyclonal
Form	Liquid
Storage	Store at 4°C short term. Aliquot and store at -20°C long term. Avoid freeze/thaw cycles.
Buffer	Liquid in PBS containing 50% glycerol, 0.5% BSA and 0.02% New type preservative N.
Purification	Affinity purification

Immunogen

Gene Name	CLN6
Alternative Names	CLN6; Ceroid-lipofuscinosis neuronal protein 6; Protein CLN6
Gene ID	54982.0
SwissProt ID	Q9NWW5.The antiserum was produced against synthesized peptide derived from human CLN6. AA range:221-270

Application

Dilution Ratio	WB 1:500 - 1:2000. IHC 1:100 - 1:300. ELISA: 1:40000..
Molecular Weight	40kD

Background

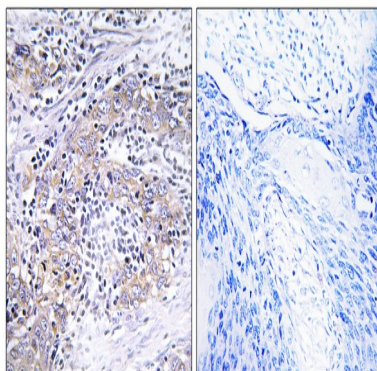
Product Name: CLN6 Rabbit Polyclonal Antibody
Catalog #: APRab09058



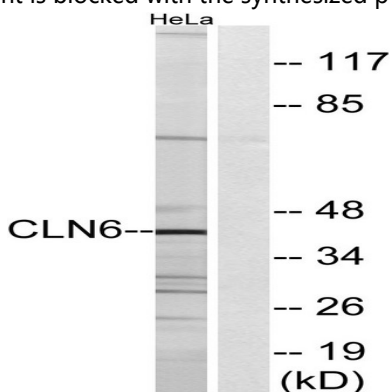
This gene is one of eight which have been associated with neuronal ceroid lipofuscinoses (NCL). Also referred to as Batten disease, NCL comprises a class of autosomal recessive, neurodegenerative disorders affecting children. The genes responsible likely encode proteins involved in the degradation of post-translationally modified proteins in lysosomes. The primary defect in NCL disorders is thought to be associated with lysosomal storage function. [provided by RefSeq, Oct 2008],disease:Defects in CLN6 are the cause of variant late-onset infantile neuronal ceroid lipofuscinosis (vLINCL) [MIM:601780].,online information:Neural Ceroid Lipofuscinoses mutation db,

Research Area

Image Data



Immunohistochemistry analysis of paraffin-embedded human cervix carcinoma tissue, using CLN6 Antibody. The picture on the right is blocked with the synthesized peptide.



Western blot analysis of lysates from HeLa cells, using CLN6 Antibody. The lane on the right is blocked with the synthesized peptide.

Note

For research use only.