

**Product Name: CLIP4 Rabbit Polyclonal Antibody**  
**Catalog #: APRab09047**



---

## Summary

<b>Production Name</b>	CLIP4 Rabbit Polyclonal Antibody
<b>Description</b>	Rabbit Polyclonal Antibody
<b>Host</b>	Rabbit
<b>Application</b>	WB,ELISA
<b>Reactivity</b>	Human,Rat,Mouse

## Performance

<b>Conjugation</b>	Unconjugated
<b>Modification</b>	Unmodified
<b>Isotype</b>	IgG
<b>Clonality</b>	Polyclonal
<b>Form</b>	Liquid
<b>Storage</b>	Store at 4°C short term. Aliquot and store at -20°C long term. Avoid freeze/thaw cycles.
<b>Buffer</b>	Liquid in PBS containing 50% glycerol, 0.5% BSA and 0.02% New type preservative N.
<b>Purification</b>	Affinity purification

## Immunogen

<b>Gene Name</b>	CLIP4
<b>Alternative Names</b>	CLIP4; RSNL2; CAP-Gly domain-containing linker protein 4; Restin-like protein 2
<b>Gene ID</b>	79745.0
<b>SwissProt ID</b>	Q8N3C7.The antiserum was produced against synthesized peptide derived from human CLIP4. AA range:321-370

## Application

<b>Dilution Ratio</b>	WB 1:500 - 1:2000. ELISA: 1:40000. Not yet tested in other applications.
<b>Molecular Weight</b>	76kD

## Background

---

**Product Name: CLIP4 Rabbit Polyclonal Antibody**  
**Catalog #: APRab09047**

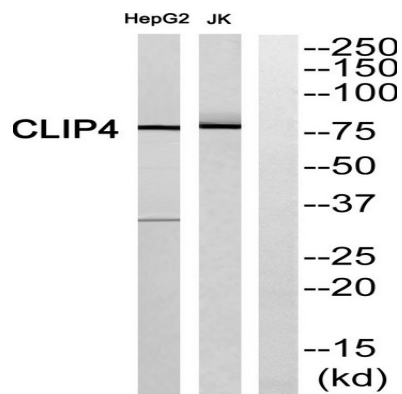


similarity:Contains 3 ANK repeats.,similarity:Contains 3 CAP-Gly domains.,similarity:Contains 3 ANK repeats.,similarity:Contains 3 CAP-Gly domains.,

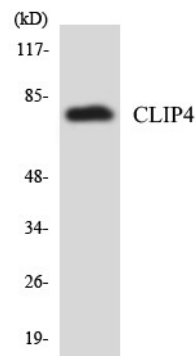
## Research Area

Regulation of Microtubule Dynamics

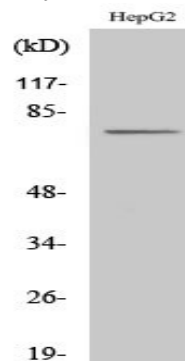
## Image Data



Western blot analysis of CLIP4 Antibody. The lane on the right is blocked with the CLIP4 peptide.



Western blot analysis of the lysates from HUVECcells using CLIP4 antibody.



Western Blot analysis of various cells using CLIP4 Polyclonal Antibody

**Product Name: CLIP4 Rabbit Polyclonal Antibody**  
**Catalog #: APRab09047**

---



**Note**

For research use only.