
Summary

| | |
|------------------------|-------------------------------------|
| Production Name | CLIP-170 Rabbit Polyclonal Antibody |
| Description | Rabbit Polyclonal Antibody |
| Host | Rabbit |
| Application | WB,ELISA |
| Reactivity | Human,Mouse,Rat |

Performance

| | |
|---------------------|--|
| Conjugation | Unconjugated |
| Modification | Unmodified |
| Isotype | IgG |
| Clonality | Polyclonal |
| Form | Liquid |
| Storage | Store at 4°C short term. Aliquot and store at -20°C long term. Avoid freeze/thaw cycles. |
| Buffer | Liquid in PBS containing 50% glycerol, 0.5% BSA and 0.02% New type preservative N. |
| Purification | Affinity purification |

Immunogen

| | |
|--------------------------|--|
| Gene Name | CLIP1 |
| Alternative Names | CLIP1; CYLN1; RSN; CAP-Gly domain-containing linker protein 1; Cytoplasmic linker protein 1; Cytoplasmic linker protein 170 alpha-2; CLIP-170; Reed-Sternberg intermediate filament-associated protein; Restin |
| Gene ID | 6249.0 |
| SwissProt ID | P30622.The antiserum was produced against synthesized peptide derived from human CLIP1. AA range:1291-1340 |

Application

| | |
|-------------------------|--|
| Dilution Ratio | WB 1:500 - 1:2000. ELISA: 1:20000. Not yet tested in other applications. |
| Molecular Weight | 161kD |

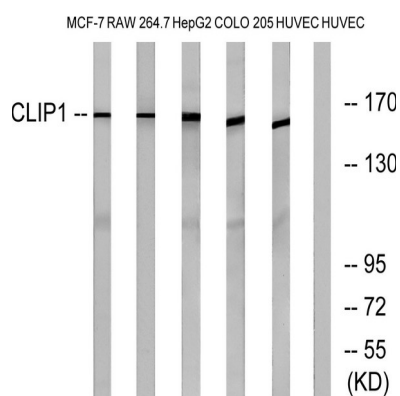
Background

The protein encoded by this gene links endocytic vesicles to microtubules. This gene is highly expressed in Reed-Sternberg cells of Hodgkin disease. Several transcript variants encoding different isoforms have been found for this gene. [provided by RefSeq, Oct 2011],function:Seems to be a intermediate filament associated protein that links endocytic vesicles to microtubules.,similarity:Contains 2 CAP-Gly domains.,subcellular location:Associated with the cytoskeleton.,tissue specificity:Highly expressed in the Reed-Sternberg cells of Hodgkin's disease.,

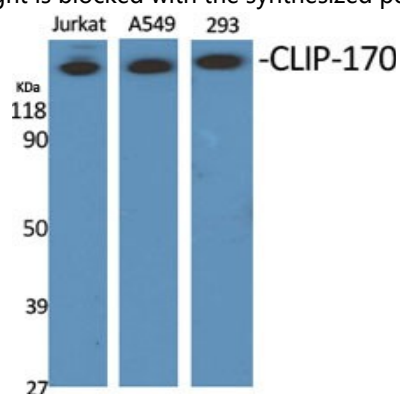
Research Area

Regulation of Microtubule Dynamics

Image Data

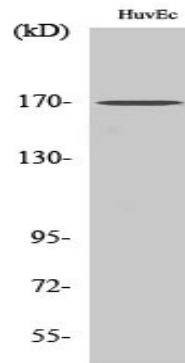


Western blot analysis of lysates from HUVEC, COLO, MCF-7, HepG2, and RAW264.7 cells, using CLIP1 Antibody. The lane on the right is blocked with the synthesized peptide.



Western Blot analysis of various cells using CLIP-170 Polyclonal Antibody

Product Name: CLIP-170 Rabbit Polyclonal Antibody
Catalog #: APRab09045



Western Blot analysis of RAW264.7 cells using CLIP-170 Polyclonal Antibody

Note

For research use only.