

Product Name: Cleaved-Thrombin R (S42) Rabbit Polyclonal Antibody
Catalog #: APRab09033

Summary

Production Name	Cleaved-Thrombin R (S42) Rabbit Polyclonal Antibody
Description	Rabbit Polyclonal Antibody
Host	Rabbit
Application	WB,ELISA
Reactivity	Human,Rat,Mouse

Performance

Conjugation	Unconjugated
Modification	Unmodified
Isotype	IgG
Clonality	Polyclonal
Form	Liquid
Storage	Store at 4°C short term. Aliquot and store at -20°C long term. Avoid freeze/thaw cycles.
Buffer	Liquid in PBS containing 50% glycerol, 0.5% BSA and 0.02% New type preservative N.
Purification	Affinity purification

Immunogen

Gene Name	F2R
Alternative Names	F2R; CF2R; PAR1; TR; Proteinase-activated receptor 1; PAR-1; Coagulation factor II receptor; Thrombin receptor
Gene ID	2149.0
SwissProt ID	P25116.The antiserum was produced against synthesized peptide derived from human PAR1. AA range:23-72

Application

Dilution Ratio	WB 1:500 - 1:2000. ELISA: 1:20000
Molecular Weight	46kD

Product Name: Cleaved-Thrombin R (S42) Rabbit Polyclonal Antibody
Catalog #: APRab09033

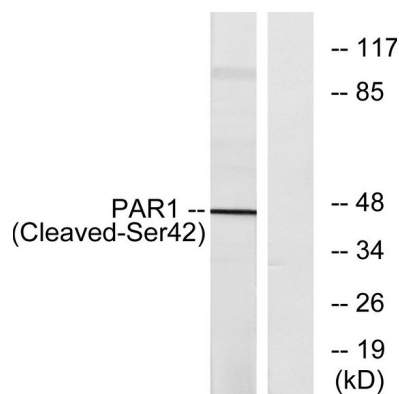
Background

Coagulation factor II receptor is a 7-transmembrane receptor involved in the regulation of thrombotic response. Proteolytic cleavage leads to the activation of the receptor. F2R is a G-protein coupled receptor family member. Alternative splicing results in multiple transcript variants. [provided by RefSeq, Aug 2015],function:High affinity receptor for activated thrombin coupled to G proteins that stimulate phosphoinositide hydrolysis. May play a role in platelets activation and in vascular development.,PTM:A proteolytic cleavage generates a new N-terminus that functions as a tethered ligand.,PTM:Phosphorylated; probably mediating desensitization prior to the uncoupling and internalization of the receptor.,similarity:Belongs to the G-protein coupled receptor 1 family.,tissue specificity:Platelets and vascular endothelial cells.,

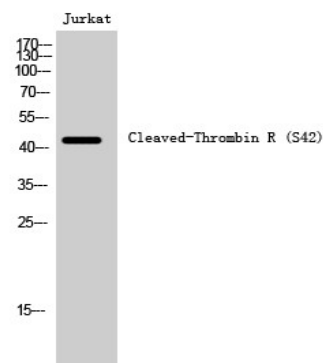
Research Area

Calcium;Neuroactive ligand-receptor interaction;Endocytosis;Complement and coagulation cascades;Regulates Actin and Cytoskeleton;

Image Data



Western blot analysis of lysates from Jurkat cells, using PAR1 (Cleaved-Ser42) Antibody. The lane on the right is blocked with the synthesized peptide.



Western Blot analysis of Jurkat cells using Cleaved-Thrombin R (S42) Polyclonal Antibody

**Product Name: Cleaved-Thrombin R (S42) Rabbit
Polyclonal Antibody
Catalog #: APRab09033**



Note

For research use only.