

**Product Name: Cleaved-Spectrin  $\alpha$  II (D1185) Rabbit Polyclonal Antibody**  
**Catalog #: APRab09029**

---

## Summary

<b>Production Name</b>	Cleaved-Spectrin $\alpha$ II (D1185) Rabbit Polyclonal Antibody
<b>Description</b>	Rabbit Polyclonal Antibody
<b>Host</b>	Rabbit
<b>Application</b>	WB,ELISA
<b>Reactivity</b>	Human,Rat,Mouse

## Performance

<b>Conjugation</b>	Unconjugated
<b>Modification</b>	Unmodified
<b>Isotype</b>	IgG
<b>Clonality</b>	Polyclonal
<b>Form</b>	Liquid
<b>Storage</b>	Store at 4°C short term. Aliquot and store at -20°C long term. Avoid freeze/thaw cycles.
<b>Buffer</b>	Liquid in PBS containing 50% glycerol, 0.5% BSA and 0.02% New type preservative N.
<b>Purification</b>	Affinity purification

## Immunogen

<b>Gene Name</b>	SPTAN1
<b>Alternative Names</b>	SPTAN1; NEAS; SPTA2; Spectrin alpha chain; non-erythrocytic 1; Alpha-II spectrin; Fodrin alpha chain; Spectrin, non-erythroid alpha subunit
<b>Gene ID</b>	6709.0
<b>SwissProt ID</b>	Q13813.The antiserum was produced against synthesized peptide derived from human SPTA2. AA range:1136-1185

## Application

<b>Dilution Ratio</b>	WB 1:500 - 1:2000. ELISA: 1:10000. Not yet tested in other applications.
<b>Molecular Weight</b>	137kD

**Product Name: Cleaved-Spectrin  $\alpha$  II (D1185) Rabbit Polyclonal Antibody**  
**Catalog #: APRab09029**



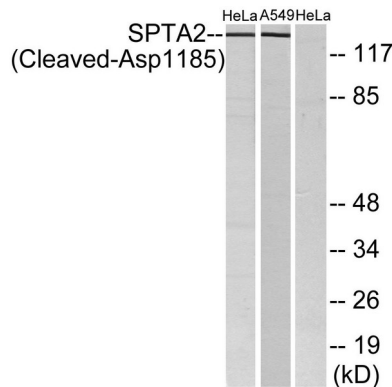
## Background

Spectrins are a family of filamentous cytoskeletal proteins that function as essential scaffold proteins that stabilize the plasma membrane and organize intracellular organelles. Spectrins are composed of alpha and beta dimers that associate to form tetramers linked in a head-to-head arrangement. This gene encodes an alpha spectrin that is specifically expressed in nonerythrocytic cells. The encoded protein has been implicated in other cellular functions including DNA repair and cell cycle regulation. Mutations in this gene are the cause of early infantile epileptic encephalopathy-5. Alternate splicing results in multiple transcript variants.[provided by RefSeq, Sep 2010],function:Fodrin, which seems to be involved in secretion, interacts with calmodulin in a calcium-dependent manner and is thus candidate for the calcium-dependent movement of the cytoskeleton at the membrane.,PTM:Phosphorylation of Tyr-1176 decreases sensitivity to cleavage by calpain in vitro.,similarity:Belongs to the spectrin family.,similarity:Contains 1 SH3 domain.,similarity:Contains 23 spectrin repeats.,similarity:Contains 3 EF-hand domains.,subunit:Like erythrocyte spectrin, the spectrin-like proteins are capable of forming dimers which can further associate to tetramers. Interacts with isoform 1 of ACP1. Interacts with CALM.,

## Research Area

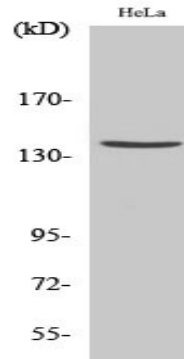
Tight junction;

## Image Data

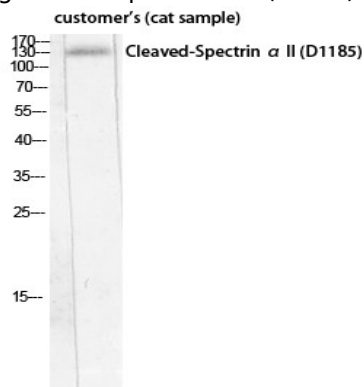


Western blot analysis of lysates from HeLa and A549 cells, treated with etoposide 25uM 24H, using SPTA2 (Cleaved-Asp1185) Antibody. The lane on the right is blocked with the synthesized peptide.

**Product Name: Cleaved-Spectrin  $\alpha$  II (D1185) Rabbit Polyclonal Antibody**  
**Catalog #: APRab09029**



Western Blot analysis of various cells using Cleaved-Spectrin  $\alpha$  II (D1185) Polyclonal Antibody diluted at 1: 500



Western Blot analysis of customer 's (cat sample) using Cleaved-Spectrin  $\alpha$  II (D1185) Polyclonal Antibody diluted at 1: 500

## Note

For research use only.