

Product Name: Cleaved-MMP-27 (Y99) Rabbit Polyclonal Antibody
Catalog #: APRab09015

Summary

Production Name	Cleaved-MMP-27 (Y99) Rabbit Polyclonal Antibody
Description	Rabbit Polyclonal Antibody
Host	Rabbit
Application	WB,ELISA
Reactivity	Human,Monkey

Performance

Conjugation	Unconjugated
Modification	Unmodified
Isotype	IgG
Clonality	Polyclonal
Form	Liquid
Storage	Store at 4°C short term. Aliquot and store at -20°C long term. Avoid freeze/thaw cycles.
Buffer	Liquid in PBS containing 50% glycerol, 0.5% BSA and 0.02% New type preservative N.
Purification	Affinity purification

Immunogen

Gene Name	MMP27
Alternative Names	MMP27; Matrix metalloproteinase-27; MMP-27
Gene ID	64066.0
SwissProt ID	Q9H306.The antiserum was produced against synthesized peptide derived from human MMP27. AA range:80-129

Application

Dilution Ratio	WB 1:500 - 1:2000. ELISA: 1:10000
Molecular Weight	48kD

Product Name: Cleaved-MMP-27 (Y99) Rabbit Polyclonal Antibody
Catalog #: APRab09015

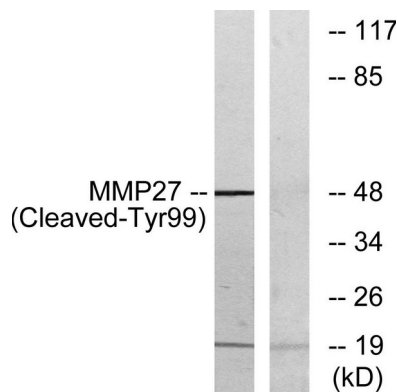
Background

Proteins of the matrix metalloproteinase (MMP) family are involved in the breakdown of extracellular matrix in normal physiological processes, such as embryonic development, reproduction, and tissue remodeling, as well as in disease processes, such as arthritis and metastasis. Most MMPs are secreted as inactive proproteins which are activated when cleaved by extracellular proteinases. [provided by RefSeq, Jul 2008],cofactor: Binds 2 zinc ions per subunit.,cofactor: Binds 4 calcium ions per subunit.,domain: The conserved cysteine present in the cysteine-switch motif binds the catalytic zinc ion, thus inhibiting the enzyme. The dissociation of the cysteine from the zinc ion upon the activation-peptide release activates the enzyme.,function: Matrix metalloproteinases degrade protein components of the extracellular matrix such as fibronectin, laminin, gelatins and/or collagens.,similarity: Belongs to the peptidase M10A family.,similarity: Contains 4 hemopexin-like domains.,tissue specificity: Expressed in B-cells.,

Research Area

Angiogenesis

Image Data



Western blot analysis of lysates from COS7 cells, treated with etoposide 25uM 1h, using MMP27 (Cleaved-Tyr99) Antibody. The lane on the right is blocked with the synthesized peptide.



Western Blot analysis of various cells using Cleaved-MMP-27 (Y99) Polyclonal Antibody

**Product Name: Cleaved-MMP-27 (Y99) Rabbit Polyclonal
Antibody**
Catalog #: APRab09015



Note

For research use only.