

Product Name: Cleaved-ITI-H1 (D672) Rabbit Polyclonal Antibody
Catalog #: APRab08999

Summary

Production Name	Cleaved-ITI-H1 (D672) Rabbit Polyclonal Antibody
Description	Rabbit Polyclonal Antibody
Host	Rabbit
Application	WB
Reactivity	Human,Mouse

Performance

Conjugation	Unconjugated
Modification	Unmodified
Isotype	IgG
Clonality	Polyclonal
Form	Liquid
Storage	Store at 4°C short term. Aliquot and store at -20°C long term. Avoid freeze/thaw cycles.
Buffer	Liquid in PBS containing 50% glycerol, 0.5% BSA and 0.02% New type preservative N.
Purification	Affinity purification

Immunogen

Gene Name	ITIH1 ITIH1; IGHEP1; Inter-alpha-trypsin inhibitor heavy chain H1; ITI heavy chain H1; ITI-HC1;
Alternative Names	Inter-alpha-inhibitor heavy chain 1; Inter-alpha-trypsin inhibitor complex component III; Serum-derived hyaluronan-associated protein; SHAP
Gene ID	3697.0
SwissProt ID	P19827.The antiserum was produced against synthesized peptide derived from human ITIH1. AA range:623-672

Application

Dilution Ratio	WB 1:500-1:2000. ELISA: 1:20000.
Molecular Weight	71kD

Product Name: Cleaved-ITI-H1 (D672) Rabbit Polyclonal Antibody
Catalog #: APRab08999

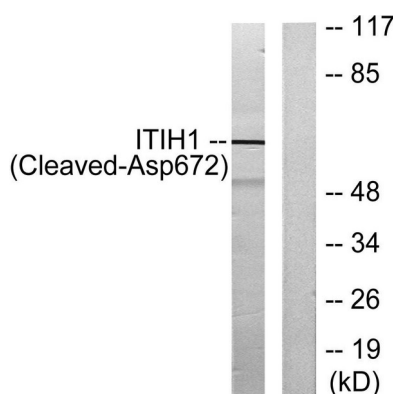


Background

This gene encodes a member of the inter-alpha-trypsin inhibitor family of proteins. Alternative splicing results in multiple transcript variants, at least one of which encodes a preproprotein that is proteolytically processed to generate the heavy chain of the inter-alpha-trypsin inhibitor complex, which is secreted by hepatocytes into the blood. The heavy chain also interacts with hyaluronan, and this interaction may play a role in ovulation and fertilization, and has been implicated in multiple inflammatory diseases. This gene is present in a gene cluster on chromosome 3. [provided by RefSeq, Nov 2015],function:Contains a potential peptide which could stimulate a broad spectrum of phagocytotic cells.,function:May act as a carrier of hyaluronan in serum or as a binding protein between hyaluronan and other matrix protein, including those on cell surfaces in tissues to regulate the localization, synthesis and degradation of hyaluronan which are essential to cells undergoing biological processes.,mass spectrometry: PubMed:9677337,polymorphism:There are 3 common alleles; ITIH1*1 with Glu-585/Gln-595, ITIH1*2 with Val-585/Arg-595 and ITIH1*3 with Glu-585/Arg-595.,PTM:Heavy chains are linked to bikunin via chondroitin 4-sulfate esterified to the alpha-carboxyl of the C-terminal aspartate after propeptide cleavage.,PTM:The S-linked glycan is composed of two units of either Glc or Gal.,similarity:Belongs to the ITIH family.,similarity:Contains 1 VWFA domain.,subunit:I-alpha-I plasma protease inhibitors are assembled from one or two heavy chains (H1, H2 or H3) and one light chain, bikunin. Inter-alpha-inhibitor (I-alpha-I) is composed of H1, H2 and bikunin, inter-alpha-like inhibitor (I-alpha-LI) of H2 and bikunin, and pre-alpha-inhibitor (P-alpha-I) of H3 and bikunin.,

Research Area

Image Data



Western blot analysis of lysates from Jurkat cells, treated with etoposide 25uM 24h, using ITIH1 (Cleaved-Asp672) Antibody. The lane on the right is blocked with the synthesized peptide.

Note

**Product Name: Cleaved-ITI-H1 (D672) Rabbit Polyclonal
Antibody
Catalog #: APRab08999**



For research use only.