

Product Name: Cleaved-Cathepsin Z (L62) Rabbit Polyclonal Antibody
Catalog #: APRab08979

Summary

Production Name	Cleaved-Cathepsin Z (L62) Rabbit Polyclonal Antibody
Description	Rabbit Polyclonal Antibody
Host	Rabbit
Application	WB,ELISA
Reactivity	Human,Monkey

Performance

Conjugation	Unconjugated
Modification	Unmodified
Isotype	IgG
Clonality	Polyclonal
Form	Liquid
Storage	Store at 4°C short term. Aliquot and store at -20°C long term. Avoid freeze/thaw cycles.
Buffer	Liquid in PBS containing 50% glycerol, 0.5% BSA and 0.02% New type preservative N.
Purification	Affinity purification

Immunogen

Gene Name	CTSZ
Alternative Names	CTSZ; Cathepsin Z; Cathepsin P; Cathepsin X
Gene ID	1522.0
SwissProt ID	Q9UBR2.The antiserum was produced against synthesized peptide derived from human CATZ. AA range:43-92

Application

Dilution Ratio	WB 1:500 - 1:2000. ELISA: 1:5000.
Molecular Weight	27kD

Product Name: Cleaved-Cathepsin Z (L62) Rabbit Polyclonal Antibody
Catalog #: APRab08979

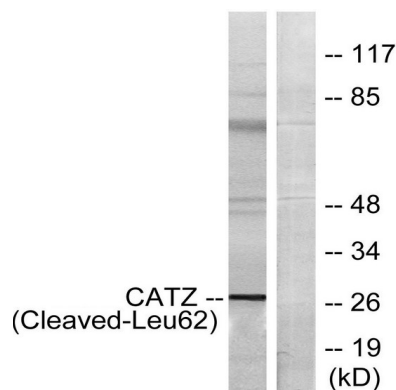
Background

The protein encoded by this gene is a lysosomal cysteine proteinase and member of the peptidase C1 family. It exhibits both carboxy-monopeptidase and carboxy-dipeptidase activities. The encoded protein has also been known as cathepsin X and cathepsin P. This gene is expressed ubiquitously in cancer cell lines and primary tumors and, like other members of this family, may be involved in tumorigenesis. [provided by RefSeq, Oct 2008],catalytic activity:Release of C-terminal amino acid residues with broad specificity, but lacks action on C-terminal proline. Shows weak endopeptidase activity.,function:Exhibits carboxy-monopeptidase as well as carboxy-dipeptidase activity.,similarity:Belongs to the peptidase C1 family.,tissue specificity:Widely expressed.,

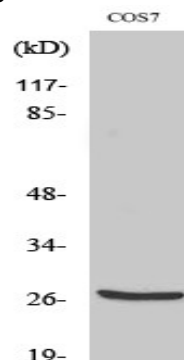
Research Area

Lysosome;

Image Data



Western blot analysis of lysates from COS7 cells, treated with etoposide 25uM 1h, using CATZ (Cleaved-Leu62) Antibody. The lane on the right is blocked with the synthesized peptide.



Western Blot analysis of various cells using Cleaved-Cathepsin Z (L62) Polyclonal Antibody

**Product Name: Cleaved-Cathepsin Z (L62) Rabbit
Polyclonal Antibody
Catalog #: APRab08979**



Note

For research use only.