

Product Name: Cleaved-Cathepsin G (I21) Rabbit Polyclonal Antibody
Catalog #: APRab08976

Summary

Production Name	Cleaved-Cathepsin G (I21) Rabbit Polyclonal Antibody
Description	Rabbit Polyclonal Antibody
Host	Rabbit
Application	WB,ELISA
Reactivity	Human,Mouse,Rat

Performance

Conjugation	Unconjugated
Modification	Unmodified
Isotype	IgG
Clonality	Polyclonal
Form	Liquid
Storage	Store at 4°C short term. Aliquot and store at -20°C long term. Avoid freeze/thaw cycles.
Buffer	Liquid in PBS containing 50% glycerol, 0.5% BSA and 0.02% New type preservative N.
Purification	Affinity purification

Immunogen

Gene Name	CTSG
Alternative Names	CTSG; Cathepsin G; CG
Gene ID	1511.0
SwissProt ID	P08311.The antiserum was produced against synthesized peptide derived from human CATG. AA range:2-51

Application

Dilution Ratio	WB 1:500 - 1:2000. ELISA: 1:20000
Molecular Weight	28+26kD

Product Name: Cleaved-Cathepsin G (I21) Rabbit Polyclonal Antibody
Catalog #: APRab08976

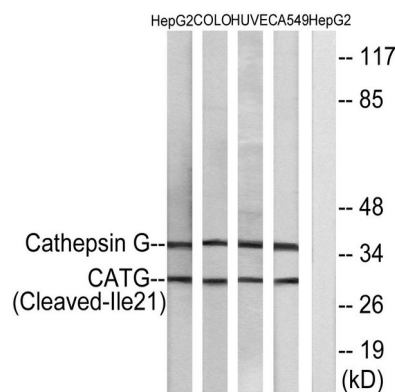
Background

The protein encoded by this gene, a member of the peptidase S1 protein family, is found in azurophilic granules of neutrophilic polymorphonuclear leukocytes. The encoded protease has a specificity similar to that of chymotrypsin C, and may participate in the killing and digestion of engulfed pathogens, and in connective tissue remodeling at sites of inflammation. In addition, the encoded protein is antimicrobial, with bacteriocidal activity against *S. aureus* and *N. gonorrhoeae*. Transcript variants utilizing alternative polyadenylation signals exist for this gene. [provided by RefSeq, Sep 2014], catalytic activity: Specificity similar to chymotrypsin C, enzyme regulation: Inhibited by soybean trypsin inhibitor, benzamidine, the synthetic peptide R13K, Z-Gly-Leu-Phe-CH₂Cl and phenylmethylsulfonyl fluoride. Inhibited by LPS from *P. aeruginosa* but not by LPS from *S. minnesota*, function: Serine protease with trypsin- and chymotrypsin-like specificity. Has antibacterial activity against the Gram-negative bacterium *P. aeruginosa*, antibacterial activity is inhibited by LPS from *P. aeruginosa*, Z-Gly-Leu-Phe-CH₂Cl and phenylmethylsulfonyl fluoride, similarity: Belongs to the peptidase S1 family, similarity: Contains 1 peptidase S1 domain.

Research Area

Neuroactive ligand-receptor interaction; Lysosome; Renin-angiotensin system; Systemic lupus erythematosus;

Image Data



Western blot analysis of lysates from HepG2, COLO, HUVEC, and A549 cells, using CATG (Cleaved-Ile21) Antibody. The lane on the right is blocked with the synthesized peptide.

**Product Name: Cleaved-Cathepsin G (I21) Rabbit
Polyclonal Antibody
Catalog #: APRab08976**



Western Blot analysis of various cells using Cleaved-Cathepsin G (I21) Polyclonal Antibody

Note

For research use only.