

Product Name: Cleaved-Cathepsin A 32k (R326) Rabbit Polyclonal Antibody
Catalog #: APRab08972



Summary

Production Name	Cleaved-Cathepsin A 32k (R326) Rabbit Polyclonal Antibody
Description	Rabbit Polyclonal Antibody
Host	Rabbit
Application	WB,ELISA
Reactivity	Human,Mouse

Performance

Conjugation	Unconjugated
Modification	Unmodified
Isotype	IgG
Clonality	Polyclonal
Form	Liquid
Storage	Store at 4°C short term. Aliquot and store at -20°C long term. Avoid freeze/thaw cycles.
Buffer	Liquid in PBS containing 50% glycerol, 0.5% BSA and 0.02% New type preservative N.
Purification	Affinity purification

Immunogen

Gene Name	CTSA CTSA; PPGB; Lysosomal protective protein; Carboxypeptidase C; Carboxypeptidase L;
Alternative Names	Cathepsin A; Protective protein cathepsin A; PPCA; Protective protein for beta-galactosidase
Gene ID	5476.0
SwissProt ID	P10619.The antiserum was produced against synthesized peptide derived from human PPGB. AA range:277-326

Application

Dilution Ratio	WB 1:500 - 1:2000. ELISA: 1:10000
Molecular Weight	33kD

Product Name: Cleaved-Cathepsin A 32k (R326) Rabbit Polyclonal Antibody
Catalog #: APRab08972



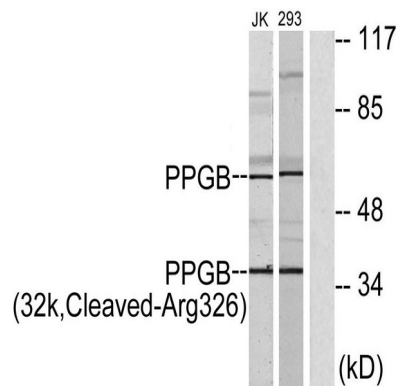
Background

This gene encodes a member of the peptidase S10 family of serine carboxypeptidases. Alternative splicing results in multiple transcript variants, at least one of which encodes a preproprotein that is proteolytically processed to generate two chains that comprise the heterodimeric active enzyme. This enzyme possesses deamidase, esterase and carboxypeptidase activities and acts as a scaffold in the lysosomal multienzyme complex. Mutations in this gene are associated with galactosialidosis. [provided by RefSeq, Nov 2015],catalytic activity:Release of a C-terminal amino acid with broad specificity.,disease:Defects in CTSA are the cause of galactosialidosis [MIM:256540]. It is an autosomal recessive disease.,function:Protective protein appears to be essential for both the activity of beta-galactosidase and neuraminidase, it associates with these enzymes and exerts a protective function necessary for their stability and activity. This protein is also a carboxypeptidase and can deamidate tachykinins.,similarity:Belongs to the peptidase S10 family.,subunit:Heterodimer of a 32 kDa chain and a 20 kDa chain; disulfide-linked.,

Research Area

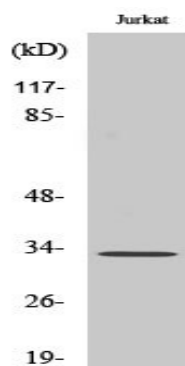
Lysosome;Renin-angiotensin system;

Image Data



Western blot analysis of lysates from 293 and Jurkat cells, treated with etoposide 25uM 1h, using PPGB (32k,Cleaved-Arg326) Antibody. The lane on the right is blocked with the synthesized peptide.

**Product Name: Cleaved-Cathepsin A 32k (R326) Rabbit
Polyclonal Antibody
Catalog #: APRab08972**



Western Blot analysis of various cells using Cleaved-Cathepsin A 32k (R326) Polyclonal Antibody

Note

For research use only.