

Product Name: Cleaved-Caspase-5 p20 (D121) Rabbit Polyclonal Antibody
Catalog #: APRab08962



Summary

Production Name	Cleaved-Caspase-5 p20 (D121) Rabbit Polyclonal Antibody
Description	Rabbit Polyclonal Antibody
Host	Rabbit
Application	WB,ELISA
Reactivity	Human,Rat,Mouse

Performance

Conjugation	Unconjugated
Modification	Unmodified
Isotype	IgG
Clonality	Polyclonal
Form	Liquid
Storage	Store at 4°C short term. Aliquot and store at -20°C long term. Avoid freeze/thaw cycles.
Buffer	Liquid in PBS containing 50% glycerol, 0.5% BSA and 0.02% New type preservative N.
Purification	Affinity purification

Immunogen

Gene Name	CASP5
Alternative Names	CASP5; ICH3; Caspase-5; CASP-5; ICE(rel)-III; Protease ICH-3; Protease TY
Gene ID	838.0
SwissProt ID	P51878.The antiserum was produced against synthesized peptide derived from human Caspase 5. AA range:102-151

Application

Dilution Ratio	WB 1:500 - 1:2000. ELISA: 1:20000
Molecular Weight	22kD

Product Name: Cleaved-Caspase-5 p20 (D121) Rabbit Polyclonal Antibody
Catalog #: APRab08962



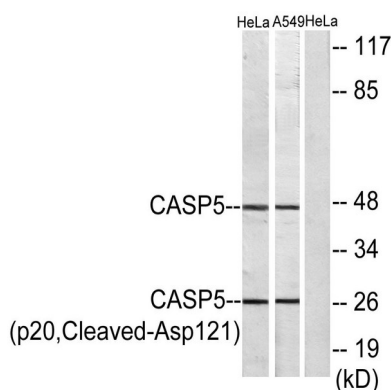
Background

This gene encodes a member of the cysteine-aspartic acid protease (caspase) family. Sequential activation of caspases plays a central role in the execution-phase of cell apoptosis. Caspases exist as inactive proenzymes which undergo proteolytic processing at conserved aspartic residues to produce two subunits, large and small, that dimerize to form the active enzyme. Overexpression of the active form of this enzyme induces apoptosis in fibroblasts. Max, a central component of the Myc/Max/Mad transcription regulation network important for cell growth, differentiation, and apoptosis, is cleaved by this protein; this process requires Fas-mediated dephosphorylation of Max. The expression of this gene is regulated by interferon-gamma and lipopolysaccharide. Alternatively spliced transcript variants have been identified for this gene. [provided by RefSeq, Aug 2010],catalytic activity:Strict requirement for Asp at the P1 position. It has a preferred cleavage sequence of Tyr-Val-Ala-Asp-|- but also cleaves at Asp-Glu-Val-Asp-|-.,function:Mediator of programmed cell death (apoptosis).,PTM:The two subunits are derived from the precursor sequence by an autocatalytic mechanism.,similarity:Belongs to the peptidase C14A family.,similarity:Contains 1 CARD domain.,subunit:Heterotetramer that consists of two anti-parallel arranged heterodimers, each one formed by a 20 kDa (p20) and a 10 kDa (p10) subunits.,tissue specificity:Expressed in barely detectable amounts in most tissues except brain, highest levels being found in lung, liver and skeletal muscle.,

Research Area

NOD-like receptor;

Image Data



Western blot analysis of lysates from HeLa and A549 cells, treated with etoposide 25uM 24h, using Caspase 5 (p20,Cleaved-Asp121) Antibody. The lane on the right is blocked with the synthesized peptide.

**Product Name: Cleaved-Caspase-5 p20 (D121) Rabbit
Polyclonal Antibody
Catalog #: APRab08962**



Western Blot analysis of various cells using Cleaved-Caspase-5 p20 (D121) Polyclonal Antibody diluted at 1: 1000

Note

For research use only.