

**Product Name: Cleaved-Aggrecan (D369) Rabbit Polyclonal Antibody**  
**Catalog #: APRab08947**

---

## Summary

<b>Production Name</b>	Cleaved-Aggrecan (D369) Rabbit Polyclonal Antibody
<b>Description</b>	Rabbit Polyclonal Antibody
<b>Host</b>	Rabbit
<b>Application</b>	WB,IHC,ELISA
<b>Reactivity</b>	Human,Rat

## Performance

<b>Conjugation</b>	Unconjugated
<b>Modification</b>	Unmodified
<b>Isotype</b>	IgG
<b>Clonality</b>	Polyclonal
<b>Form</b>	Liquid
<b>Storage</b>	Store at 4°C short term. Aliquot and store at -20°C long term. Avoid freeze/thaw cycles.
<b>Buffer</b>	Liquid in PBS containing 50% glycerol, 0.5% BSA and 0.02% New type preservative N.
<b>Purification</b>	Affinity purification

## Immunogen

<b>Gene Name</b>	ACAN ACAN; AGC1; CSPG1; MSK16; Aggrecan core protein; Cartilage-specific proteoglycan
<b>Alternative Names</b>	core protein; CSPCP; Chondroitin sulfate proteoglycan core protein 1; Chondroitin sulfate proteoglycan 1
<b>Gene ID</b>	176.0
<b>SwissProt ID</b>	P16112.The antiserum was produced against synthesized peptide derived from human Aggrecan. AA range:320-369

## Application

<b>Dilution Ratio</b>	WB 1:500 - 1:2000. IHC 1:100 - 1:300. ELISA: 1:20000..
<b>Molecular Weight</b>	44kD

---

**Product Name: Cleaved-Aggrecan (D369) Rabbit  
Polyclonal Antibody  
Catalog #: APRab08947**

---

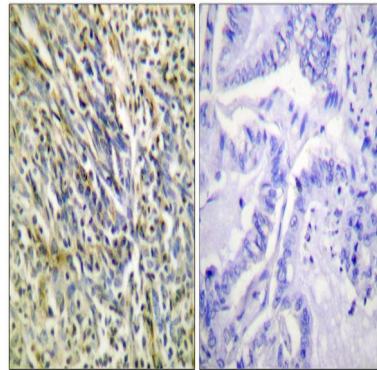
## Background

This gene is a member of the aggrecan/versican proteoglycan family. The encoded protein is an integral part of the extracellular matrix in cartilagenous tissue and it withstands compression in cartilage. Mutations in this gene may be involved in skeletal dysplasia and spinal degeneration. Multiple alternatively spliced transcript variants that encode different protein isoforms have been observed in this gene. [provided by RefSeq, Jul 2008],alternative products:Additional isoforms seem to exist,developmental stage:Expression was detected in chondrocytes throughout the developing skeleton.,disease:Defects in ACAN are the cause of spondyloepiphyseal dysplasia type Kimberley (SEDK) [MIM:608361]. Spondyloepiphyseal dysplasias are a heterogeneous group of congenital chondrodysplasias that specifically affect epiphyses and vertebrae. The autosomal dominant SEDK is associated with premature degenerative arthropathy.,domain:Two globular domains, G1 and G2, comprise the N-terminus of the proteoglycan, while another globular region, G3, makes up the C-terminus. G1 contains Link domains and thus consists of three disulfide-bonded loop structures designated as the A, B, B' motifs. G2 is similar to G1. The keratan sulfate (KS) and the chondroitin sulfate (CS) attachment domains lie between G2 and G3.,function:This proteoglycan is a major component of extracellular matrix of cartilagenous tissues. A major function of this protein is to resist compression in cartilage. It binds avidly to hyaluronic acid via an N-terminal globular region.,online information:Aggrecan,PTM:Contains mostly chondroitin sulfate, but also keratan sulfate chains, N-linked and O-linked oligosaccharides. The release of aggrecan fragments from articular cartilage into the synovial fluid at all stages of human osteoarthritis is the result of cleavage by aggrecanase.,similarity:Belongs to the aggrecan/versican proteoglycan family.,similarity:Contains 1 C-type lectin domain.,similarity:Contains 1 EGF-like domain.,similarity:Contains 1 Ig-like V-type (immunoglobulin-like) domain.,similarity:Contains 1 Sushi (CCP/SCR) domain.,similarity:Contains 4 Link domains.,subunit:Interacts with FBLN1.,tissue specificity:Restricted to cartilages.,

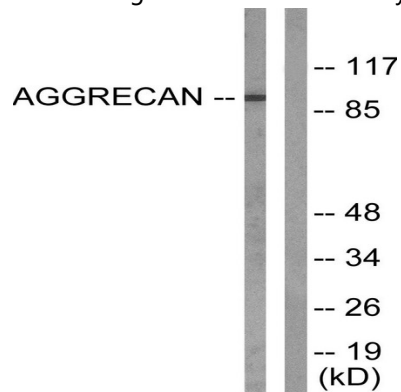
## Research Area

## Image Data

**Product Name: Cleaved-Aggrecan (D369) Rabbit Polyclonal Antibody**  
**Catalog #: APRab08947**



Immunohistochemistry analysis of paraffin-embedded human lung carcinoma tissue, using Aggrecan (Cleaved-Asp369) Antibody. The picture on the right is blocked with the synthesized peptide.



Western blot analysis of lysates from Jurkat cells, treated with Etoposide 25uM 60', using Aggrecan (Cleaved-Asp369) Antibody. The lane on the right is blocked with the synthesized peptide.

## Note

For research use only.