

**Product Name: CLCC1 Rabbit Polyclonal Antibody**  
**Catalog #: APRab08930**



## Summary

<b>Production Name</b>	CLCC1 Rabbit Polyclonal Antibody
<b>Description</b>	Rabbit Polyclonal Antibody
<b>Host</b>	Rabbit
<b>Application</b>	IF, WB, ELISA
<b>Reactivity</b>	Human, Rat, Mouse

## Performance

<b>Conjugation</b>	Unconjugated
<b>Modification</b>	Unmodified
<b>Isotype</b>	IgG
<b>Clonality</b>	Polyclonal
<b>Form</b>	Liquid
<b>Storage</b>	Store at 4°C short term. Aliquot and store at -20°C long term. Avoid freeze/thaw cycles.
<b>Buffer</b>	Liquid in PBS containing 50% glycerol, 0.5% BSA and 0.02% New type preservative N.
<b>Purification</b>	Affinity purification

## Immunogen

<b>Gene Name</b>	CLCC1
<b>Alternative Names</b>	CLCC1; KIAA0761; MCLC; Chloride channel CLIC-like protein 1; Mid-1-related chloride channel protein 1
<b>Gene ID</b>	23155.0
<b>SwissProt ID</b>	Q96S66. The antiserum was produced against synthesized peptide derived from human CLCC1. AA range:391-440

## Application

<b>Dilution Ratio</b>	WB 1:500 - 1:2000. IF 1:200 - 1:1000. ELISA: 1:40000. Not yet tested in other applications.
<b>Molecular Weight</b>	62kD

**Product Name: CLCC1 Rabbit Polyclonal Antibody**  
**Catalog #: APRab08930**

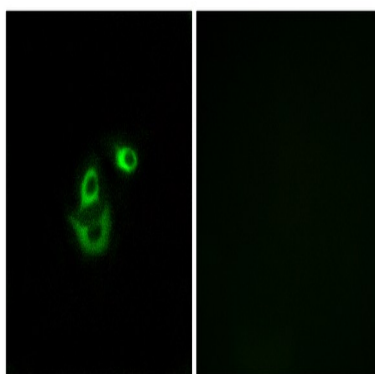


## Background

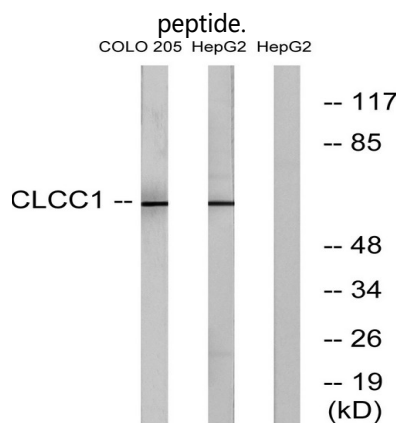
function: Seems to act as a chloride ion channel., similarity: Belongs to the chloride channel MCLC family., function: Seems to act as a chloride ion channel., similarity: Belongs to the chloride channel MCLC family.,

## Research Area

## Image Data

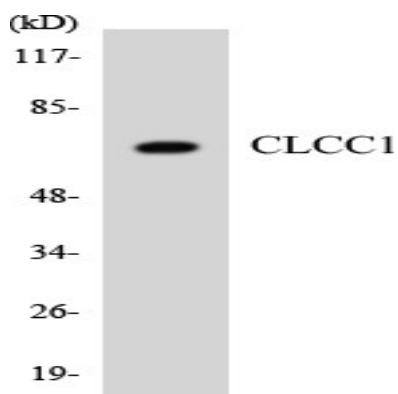


Immunofluorescence analysis of A549 cells, using CLCC1 Antibody. The picture on the right is blocked with the synthesized

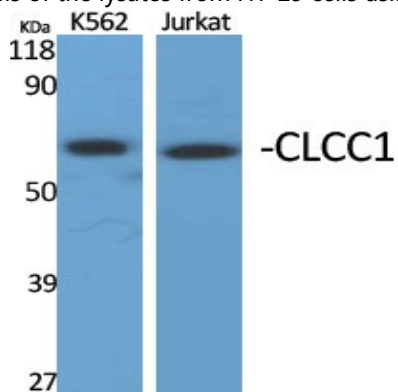


Western blot analysis of lysates from COLO and HepG2 cells, using CLCC1 Antibody. The lane on the right is blocked with the synthesized peptide.

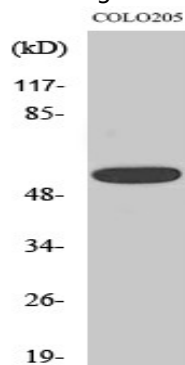
Product Name: CLCC1 Rabbit Polyclonal Antibody  
Catalog #: APRab08930



Western blot analysis of the lysates from HT-29 cells using CLCC1 antibody.



Western Blot analysis of various cells using CLCC1 Polyclonal Antibody diluted at 1: 1000



Western Blot analysis of HepG2 cells using CLCC1 Polyclonal Antibody diluted at 1: 1000

## Note

For research use only.