
Summary

Production Name	Claudin-2 Rabbit Polyclonal Antibody
Description	Rabbit Polyclonal Antibody
Host	Rabbit
Application	IHC, WB, ELISA
Reactivity	Human, Mouse

Performance

Conjugation	Unconjugated
Modification	Unmodified
Isotype	IgG
Clonality	Polyclonal
Form	Liquid
Storage	Store at 4°C short term. Aliquot and store at -20°C long term. Avoid freeze/thaw cycles.
Buffer	Liquid in PBS containing 50% glycerol, 0.5% BSA and 0.02% New type preservative N.
Purification	Affinity purification

Immunogen

Gene Name	CLDN2
Alternative Names	CLDN2; PSEC0059; SP82; Claudin-2; SP82
Gene ID	9075.0
SwissProt ID	P57739. The antiserum was produced against synthesized peptide derived from human Claudin 2. AA range: 181-230

Application

Dilution Ratio	WB 1:500 - 1:2000. IHC 1:100 - 1:300. ELISA: 1:5000..
Molecular Weight	25kD

Background

Product Name: Claudin-2 Rabbit Polyclonal Antibody
Catalog #: APRab08906

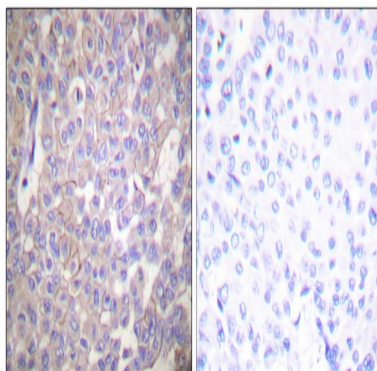


This gene product belongs to the claudin protein family whose members have been identified as major integral membrane proteins localized exclusively at tight junctions. Claudins are expressed in an organ-specific manner and regulate tissue-specific physiologic properties of tight junctions. This protein is expressed in the intestine. Alternatively spliced transcript variants with different 5' untranslated region have been found for this gene.[provided by RefSeq, Jan 2010],function:Plays a major role in tight junction-specific obliteration of the intercellular space, through calcium-independent cell-adhesion activity.,similarity:Belongs to the claudin family.,subunit:Can form homo- and heteropolymers with other CLDN. Homopolymers interact with CLDN3, but not CLDN1, homopolymers. Directly interacts with TJP1/ZO-1, TJP2/ZO-2 and TJP3/ZO-3.,

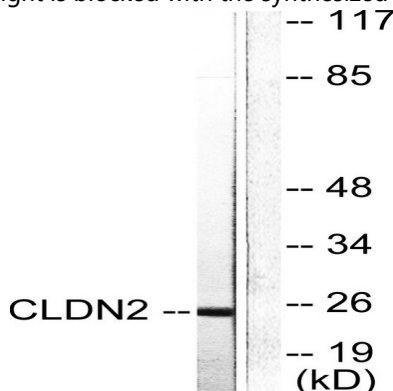
Research Area

Cell adhesion molecules (CAMs);Tight junction;Leukocyte transendothelial migration;

Image Data

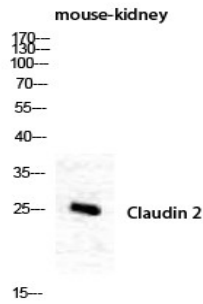


Immunohistochemistry analysis of paraffin-embedded human breast carcinoma tissue, using Claudin 2 Antibody. The picture on the right is blocked with the synthesized peptide.



Western blot analysis of lysates from NIH/3T3 cells, using Claudin 2 Antibody. The lane on the right is blocked with the synthesized peptide.

Product Name: Claudin-2 Rabbit Polyclonal Antibody
Catalog #: APRab08906



Western Blot analysis of mouse-kidney cells using Claudin-2 Polyclonal Antibody diluted at 1: 1000

Note

For research use only.