

Summary

Production Name	Claudin-17 Rabbit Polyclonal Antibody
Description	Rabbit Polyclonal Antibody
Host	Rabbit
Application	WB
Reactivity	Human,Rat,Mouse

Performance

Conjugation	Unconjugated
Modification	Unmodified
Isotype	IgG
Clonality	Polyclonal
Form	Liquid
Storage	Store at 4°C short term. Aliquot and store at -20°C long term. Avoid freeze/thaw cycles.
Buffer	Liquid in PBS containing 50% glycerol, 0.5% BSA and 0.02% New type preservative N.
Purification	Affinity purification

Immunogen

Gene Name	CLDN17
Alternative Names	CLDN17; Claudin-17
Gene ID	26285.0
SwissProt ID	P56750.Synthesized peptide derived from Claudin-17 . at AA range: 150-230

Application

Dilution Ratio	WB 1:500-1:2000. ELISA: 1:20000.
Molecular Weight	24kD

Background

This gene encodes a member of the claudin family. Claudins are integral membrane proteins and components of tight junction strands. Tight junction strands serve as a physical barrier to prevent solutes and water from passing freely through

Product Name: Claudin-17 Rabbit Polyclonal Antibody
Catalog #: APRab08903

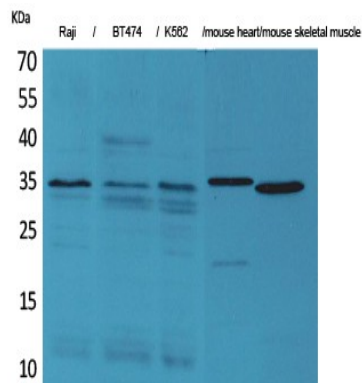


the paracellular space between epithelial or endothelial cell sheets, and also play critical roles in maintaining cell polarity and signal transductions. This gene is intronless and is clustered with CLDN8 on chromosome 21q22.11. [provided by RefSeq, Jun 2010],function:Plays a major role in tight junction-specific obliteration of the intercellular space, through calcium-independent cell-adhesion activity.,similarity:Belongs to the claudin family.,

Research Area

Cell adhesion molecules (CAMs);Tight junction;Leukocyte transendothelial migration;

Image Data



Western Blot analysis of Raji, BT474, K562, mouse heart, mouse skeletal muscle cells using Claudin-17 Polyclonal Antibody..

Secondary antibody was diluted at 1:20000

Note

For research use only.