

## Summary

<b>Production Name</b>	Claudin-10 Rabbit Polyclonal Antibody
<b>Description</b>	Rabbit Polyclonal Antibody
<b>Host</b>	Rabbit
<b>Application</b>	WB
<b>Reactivity</b>	Human,Mouse,Rat

## Performance

<b>Conjugation</b>	Unconjugated
<b>Modification</b>	Unmodified
<b>Isotype</b>	IgG
<b>Clonality</b>	Polyclonal
<b>Form</b>	Liquid
<b>Storage</b>	Store at 4°C short term. Aliquot and store at -20°C long term. Avoid freeze/thaw cycles.
<b>Buffer</b>	Liquid in PBS containing 50% glycerol, 0.5% BSA and 0.02% New type preservative N.
<b>Purification</b>	Affinity purification

## Immunogen

<b>Gene Name</b>	CLDN10
<b>Alternative Names</b>	CLDN10; Claudin-10; OSP-like protein
<b>Gene ID</b>	9071.0
<b>SwissProt ID</b>	P78369.The antiserum was produced against synthesized peptide derived from human Claudin 10. AA range:179-228

## Application

<b>Dilution Ratio</b>	WB 1:500-1:2000. ELISA: 1:10000.
<b>Molecular Weight</b>	25kD

## Background

This gene encodes a member of the claudin family. Claudins are integral membrane proteins and components of tight

**Product Name: Claudin-10 Rabbit Polyclonal Antibody**  
**Catalog #: APRab08901**

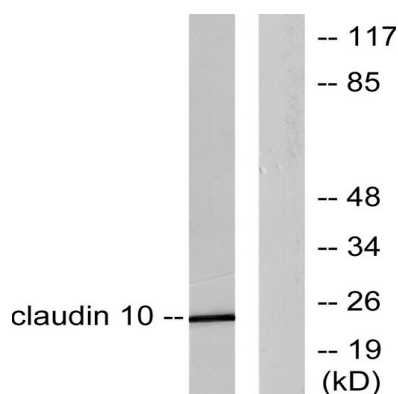


junction strands. Tight junction strands serve as a physical barrier to prevent solutes and water from passing freely through the paracellular space between epithelial or endothelial cell sheets, and also play critical roles in maintaining cell polarity and signal transductions. The expression level of this gene is associated with recurrence of primary hepatocellular carcinoma. Six alternatively spliced transcript variants encoding different isoforms have been reported, but the transcript sequences of some variants are not determined.[provided by RefSeq, Jun 2010],function:Plays a major role in tight junction-specific obliteration of the intercellular space, through calcium-independent cell-adhesion activity.,similarity:Belongs to the claudin family.,

## Research Area

Cell adhesion molecules (CAMs);Tight junction;Leukocyte transendothelial migration;

## Image Data



Western blot analysis of lysates from LOVO cells, using Claudin 10 Antibody. The lane on the right is blocked with the synthesized peptide.

## Note

For research use only.