

Summary

Production Name	Cks2 Rabbit Polyclonal Antibody
Description	Rabbit Polyclonal Antibody
Host	Rabbit
Application	IHC,ELISA
Reactivity	Human,Mouse

Performance

Conjugation	Unconjugated
Modification	Unmodified
Isotype	IgG
Clonality	Polyclonal
Form	Liquid
Storage	Store at 4°C short term. Aliquot and store at -20°C long term. Avoid freeze/thaw cycles.
Buffer	Liquid in PBS containing 50% glycerol, 0.5% BSA and 0.02% New type preservative N.
Purification	Affinity purification

Immunogen

Gene Name	CKS2
Alternative Names	CKS2; Cyclin-dependent kinases regulatory subunit 2; CKS-2
Gene ID	1164.0
SwissProt ID	P33552.The antiserum was produced against synthesized peptide derived from human CKS2. AA range:1-50

Application

Dilution Ratio	IHC 1:100-1:300 ELISA: 1:20000
Molecular Weight	

Background

CDC28 protein kinase regulatory subunit 2(CKS2) Homo sapiens CKS2 protein binds to the catalytic subunit of the cyclin

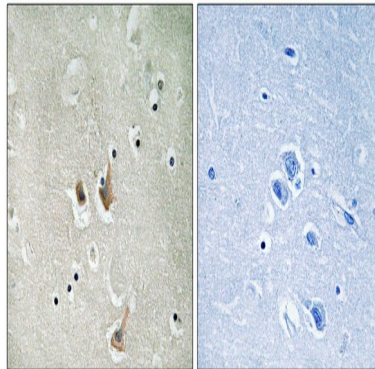
Product Name: Cks2 Rabbit Polyclonal Antibody
Catalog #: APRab08877



dependent kinases and is essential for their biological function. The CKS2 mRNA is found to be expressed in different patterns through the cell cycle in HeLa cells, which reflects specialized role for the encoded protein. [provided by RefSeq, Jul 2008],function: Binds to the catalytic subunit of the cyclin dependent kinases and is essential for their biological function.,similarity: Belongs to the CKS family.,subunit: Forms an homohexamer that can probably bind six kinase subunits.,

Research Area

Image Data



Immunohistochemistry analysis of paraffin-embedded human brain tissue, using CKS2 Antibody. The picture on the right is blocked with the synthesized peptide.

Note

For research use only.