

**Product Name: CKR-2 Rabbit Polyclonal Antibody**  
**Catalog #: APRab08867**



## Summary

<b>Production Name</b>	CKR-2 Rabbit Polyclonal Antibody
<b>Description</b>	Rabbit Polyclonal Antibody
<b>Host</b>	Rabbit
<b>Application</b>	WB
<b>Reactivity</b>	Mouse,Rat

## Performance

<b>Conjugation</b>	Unconjugated
<b>Modification</b>	Unmodified
<b>Isotype</b>	IgG
<b>Clonality</b>	Polyclonal
<b>Form</b>	Liquid
<b>Storage</b>	Store at 4°C short term. Aliquot and store at -20°C long term. Avoid freeze/thaw cycles.
<b>Buffer</b>	Liquid in PBS containing 50% glycerol, 0.5% BSA and 0.02% New type preservative N.
<b>Purification</b>	Affinity purification

## Immunogen

<b>Gene Name</b>	CCR2
<b>Alternative Names</b>	CCR2; CMKBR2; C-C chemokine receptor type 2; C-C CKR-2; CC-CKR-2; CCR-2; CCR2; Monocyte chemoattractant protein 1 receptor; MCP-1-R; CD antigen CD192
<b>Gene ID</b>	60463.0
<b>SwissProt ID</b>	O55193.Synthesized peptide derived from CKR-2 . at AA range: 250-330

## Application

<b>Dilution Ratio</b>	WB 1:500-1:2000. ELISA: 1:5000.
<b>Molecular Weight</b>	46kD

## Background

CCR2 (C-C Motif Chemokine Receptor 2) is a Protein Coding gene. Diseases associated with CCR2 include idiopathic

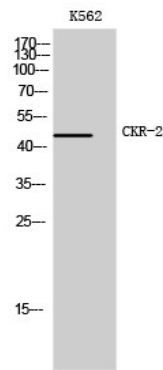
**Product Name: CKR-2 Rabbit Polyclonal Antibody**  
**Catalog #: APRab08867**



anterior uveitis and cd3zeta deficiency. Among its related pathways are Signaling by GPCR and A-beta Pathways: uptake and Degradation. GO annotations related to this gene include G-protein coupled receptor activity and chemokine receptor activity. An important paralog of this gene is CCR9. eceptor for the CCL2, CCL7 and CCL13 chemokines. Transduces a signal by increasing intracellular calcium ion levels. Alternative coreceptor with CD4 for HIV-1 infection. hemokine CC receptors (CCRs) predominantly recognize CC chemokines. CC chemokines are distinguished by having four conserved cysteines, with the first two cysteines being adjacent to each other. There are 10 chemokine CC receptors.

## Research Area

## Image Data



Western Blot analysis of K562 cells using CKR-2 Polyclonal Antibody

## Note

For research use only.