
Summary

Production Name	CIB3 Rabbit Polyclonal Antibody
Description	Rabbit Polyclonal Antibody
Host	Rabbit
Application	WB,ELISA
Reactivity	Human,Mouse

Performance

Conjugation	Unconjugated
Modification	Unmodified
Isotype	IgG
Clonality	Polyclonal
Form	Liquid
Storage	Store at 4°C short term. Aliquot and store at -20°C long term. Avoid freeze/thaw cycles.
Buffer	Liquid in PBS containing 50% glycerol, 0.5% BSA and 0.02% New type preservative N.
Purification	Affinity purification

Immunogen

Gene Name	CIB3
Alternative Names	CIB3; KIP3; Calcium and integrin-binding family member 3; Kinase-interacting protein 3; KIP 3
Gene ID	117286.0
SwissProt ID	Q96Q77.The antiserum was produced against synthesized peptide derived from human CIB3. AA range:138-187

Application

Dilution Ratio	WB 1:500 - 1:2000. ELISA: 1:20000
Molecular Weight	32kD

Product Name: CIB3 Rabbit Polyclonal Antibody
Catalog #: APRab08809

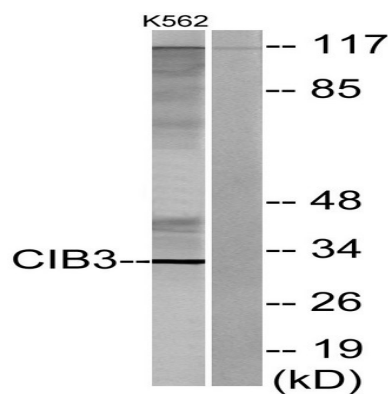


Background

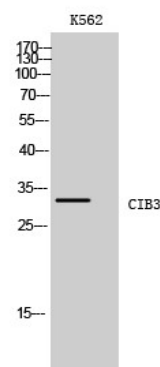
This gene product shares a high degree of sequence similarity with DNA-dependent protein kinase catalytic subunit-interacting protein 2 in human and mouse, and like them may bind the catalytic subunit of DNA-dependent protein kinases. The exact function of this gene is not known. Alternative splicing results in multiple transcript variants. [provided by RefSeq, Jul 2014],similarity:Contains 3 EF-hand domains.,

Research Area

Image Data



Western blot analysis of lysates from K562 cells, using CIB3 Antibody. The lane on the right is blocked with the synthesized peptide.



Western Blot analysis of K562 cells using CIB3 Polyclonal Antibody

Note

For research use only.